

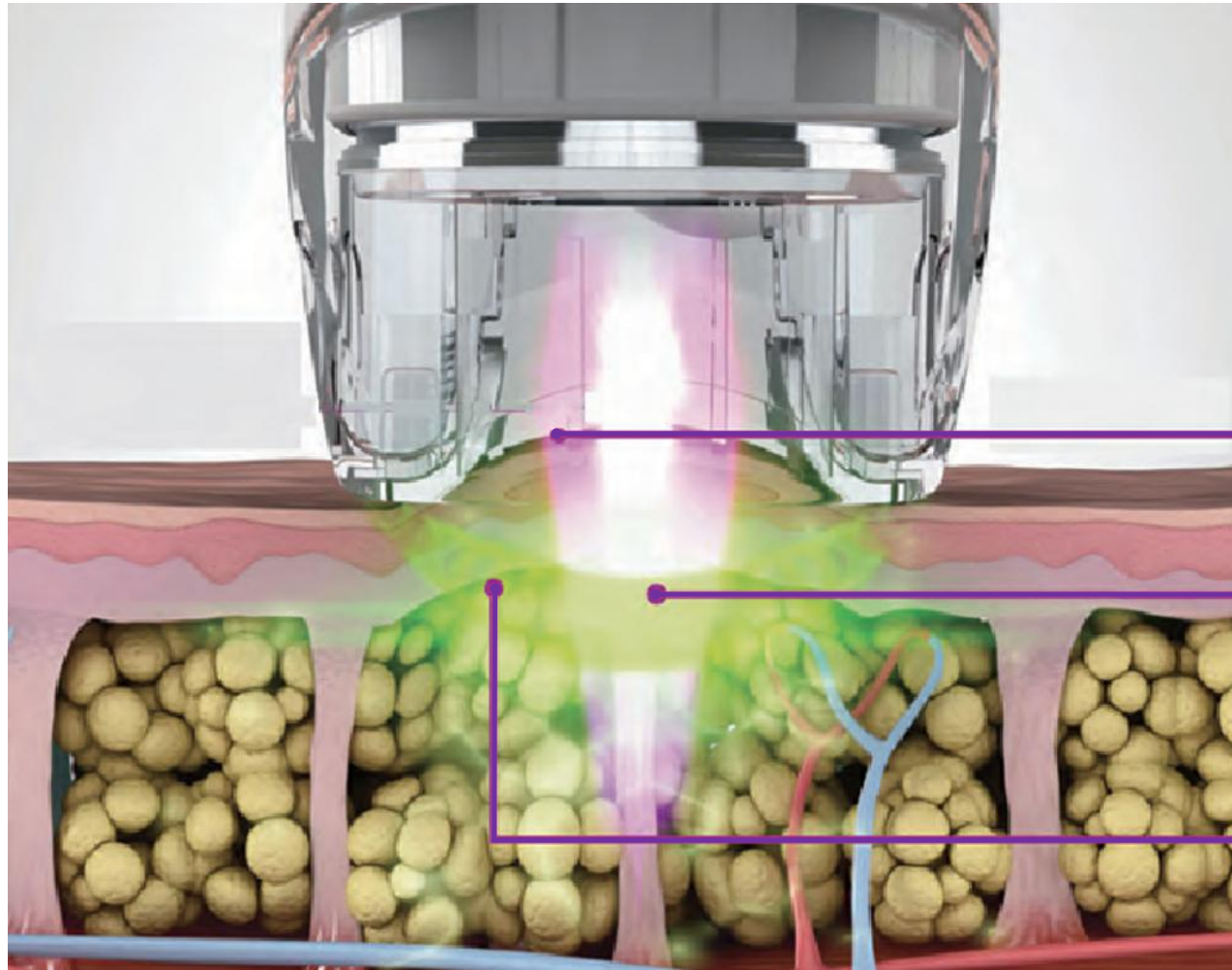


# V-shaping system +RF Roller

---



# Treatment Principle



**A vacuum elevates the target tissue, bringing it closer to the energy source.**

**Infrared light(IR) directly heats the targeted area.**

**Bi-polar radio frequency (RF) energy safely guides heat evenly throughout the targeted area, so that it heats faster without damaging the skin.**

# Scope of Treatment

- **Body Contouring**

- **Wrinkle Removal**

- **Cellulite Removal**

- **Face Lifting**

- **Body Slimming**

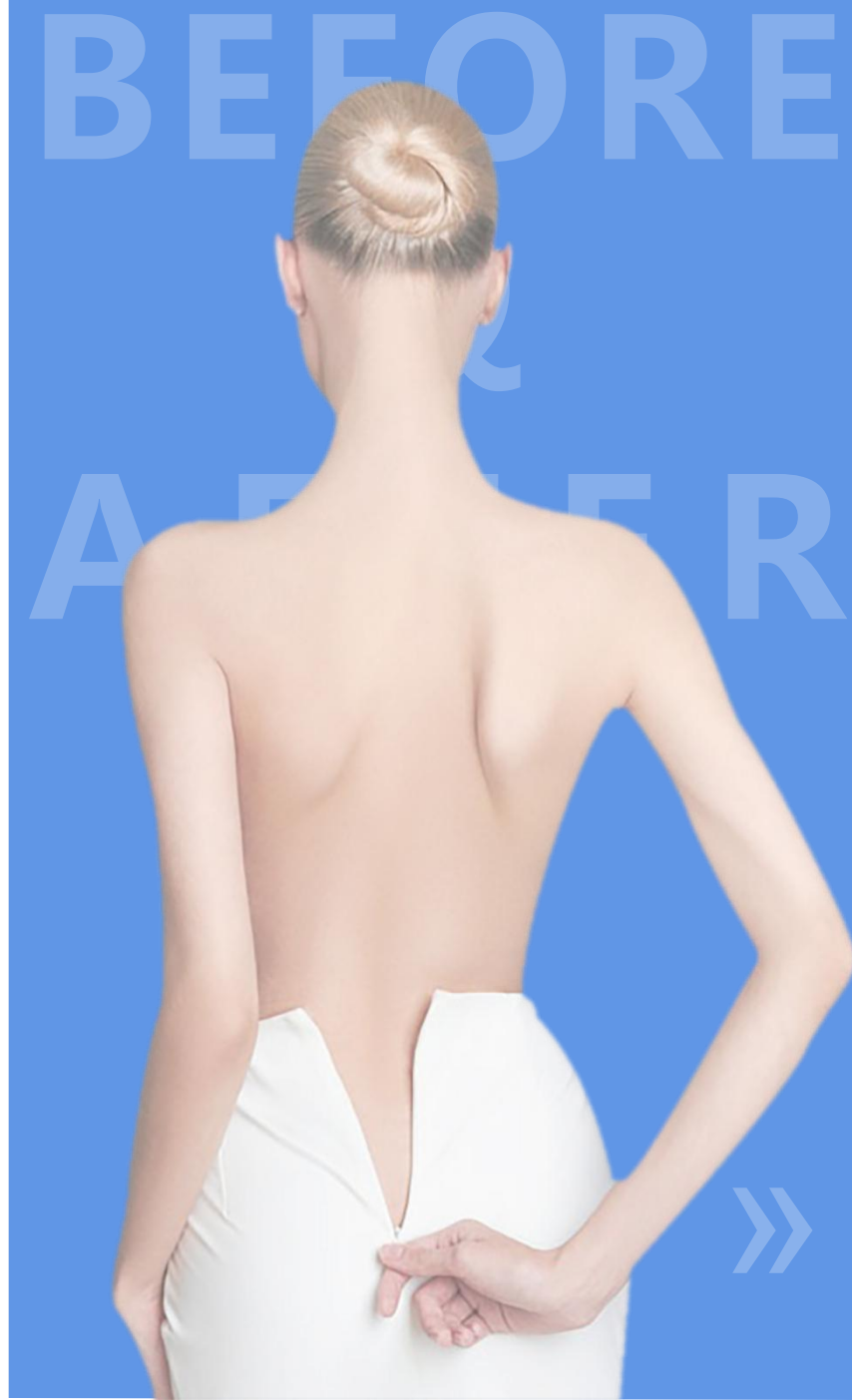
- **Skin Tightening**

- **Skin Texture & Tone**

- **Circumference Reduction**



## Before & After







# What is cellulite?

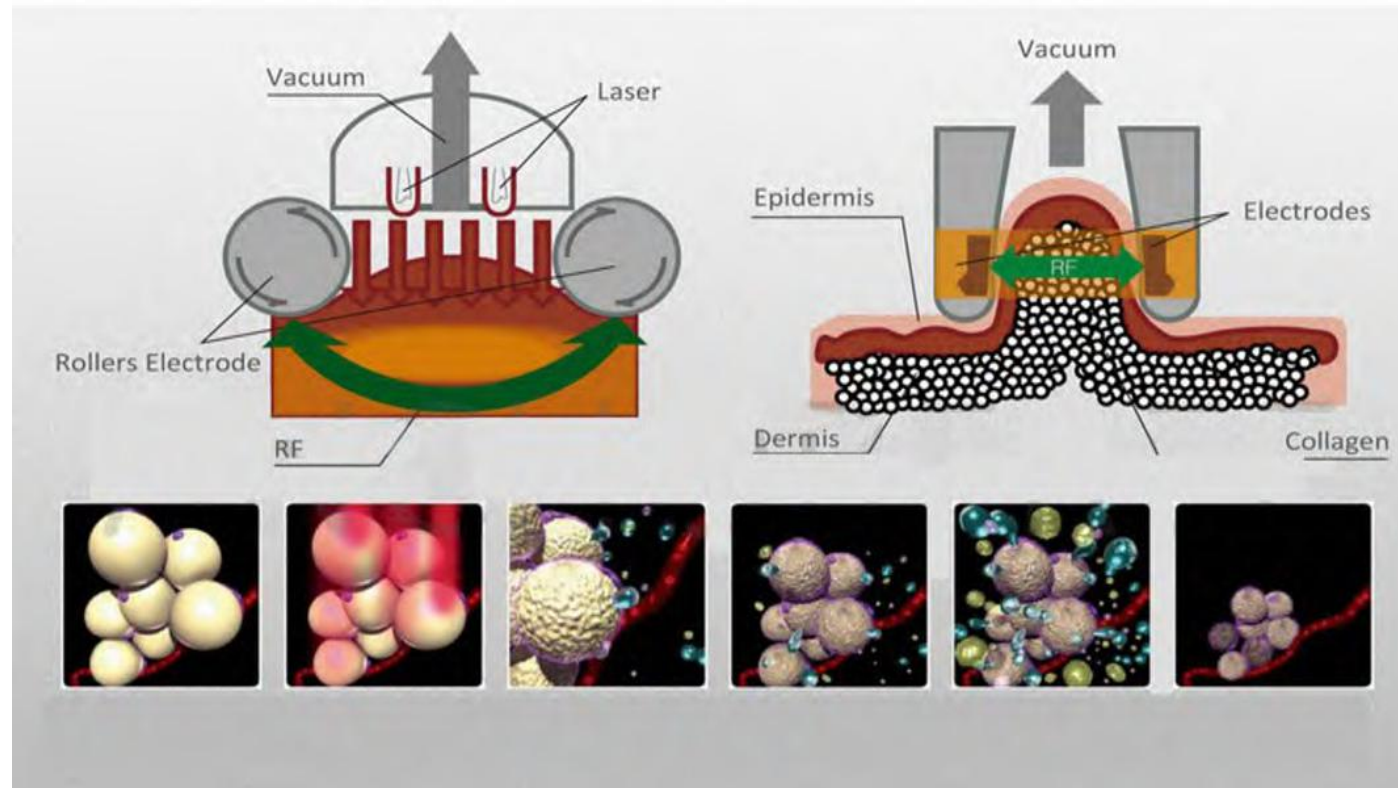
Cellulite is a structural skin change that occurs in most post pubertal females whether they are thin or overweight.

It presents itself as a modification of skin morphology evident by skin dimpling and nodularity that occurs mainly in women on the pelvic region, lower limbs, and abdomen, and is caused by the herniation of subcutaneous fat within fibrous connective tissue, leading to a padded or orange peel-like appearance.

Cellulite can occur in women of all ages and tends to become more visible with age.

Over time, the skin loses its thickness and thereby enhances the visibility of the unsightly cellulite bumps.

# How does Infrared RF Vacuum Roller work to help get rid of cellulite?



**The Infrared RF Vacuum Roller combines four different technologies including IR (infrared), BiPolar RF (radio-frequency) and mechanical tissue manipulation using pulsed vacuum and massage rollers.**

The combination of the IR and vacuum coupled RF technologies causes deep heating of the connective tissue including the fibrous septae which in turn promotes an increase in collagen depositing and local cellular metabolism resulting in a localized reduction in skin laxity and volume. The additional mechanical tissue manipulation of the Vela causes an immediate increase in circulation and lymphatic drainage, both essential components for healthy skin structure.

# Advantages

Profitable business driver high patient demand for cellulite & body contouring treatments Add more patients to your practice with short treatment sessions

Excellent results in just 1-3 sessions  
Enhanced user experience with new Guided Mode software

Short treatment sessions and outstanding results, from as little as a single session Zero downtime and little or no discomfort High patient satisfaction

## 5 technologies in one machine

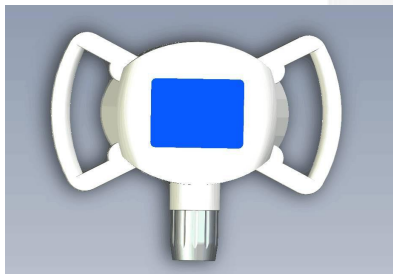
*Vacuum*  
+  
*940nm near-infrared laser*  
+  
*Bipolar RF*  
+  
*Cavitation*  
+  
*mechanical rollers*



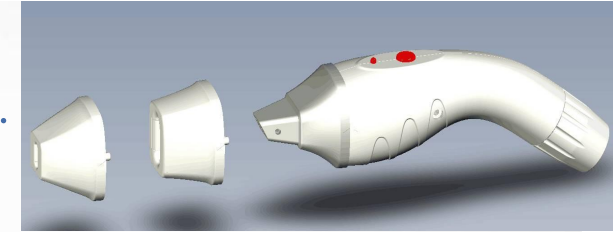
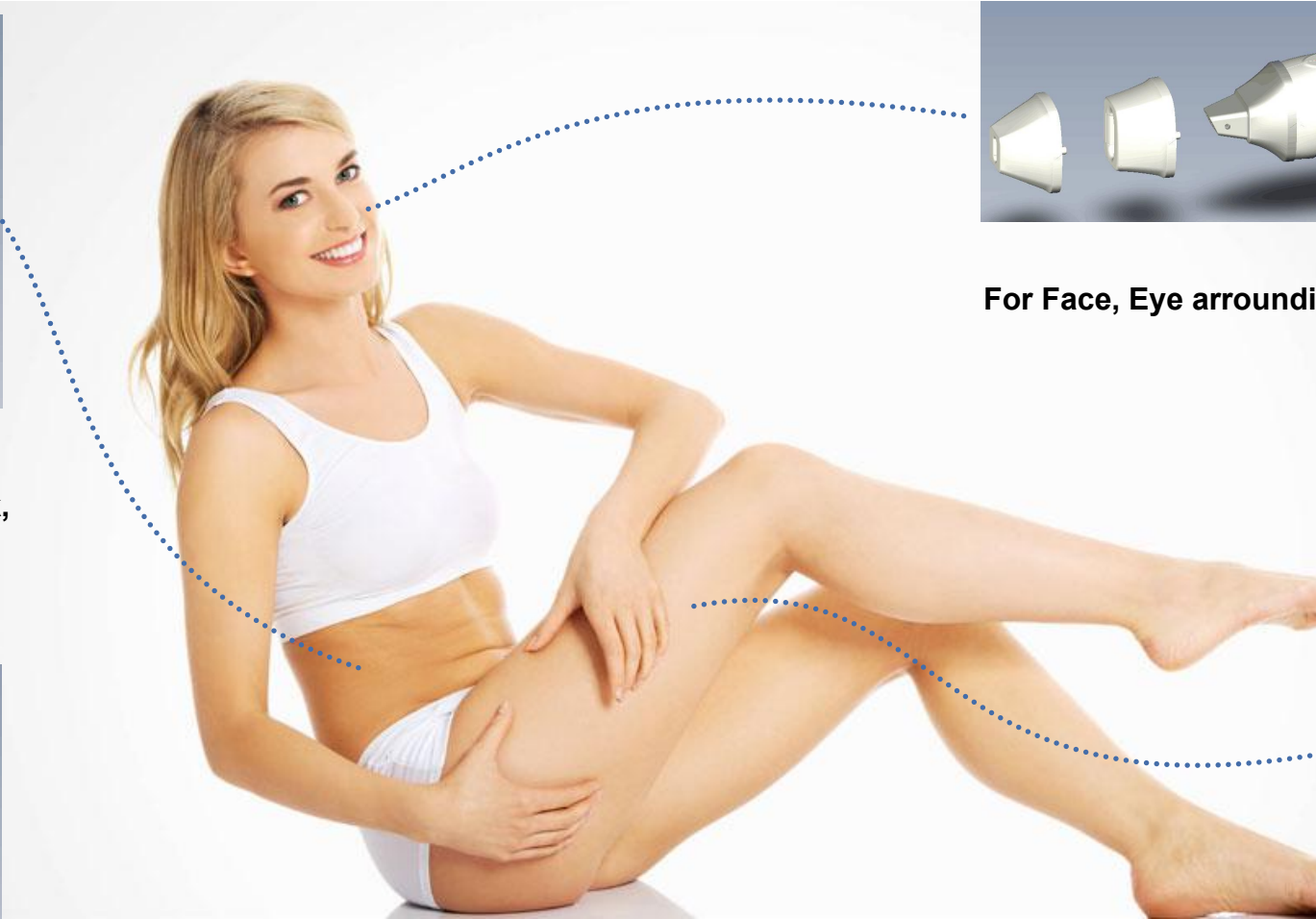
# Three Different Treatment Handpieces for Whole Body Treatment



**Big Handpiece: For Abdomen, Flank, Buttock, Thigh treatment area.**



**For whole body massage shaping**



**For Face, Eye surrounding treatment area.**



**Middle Handpiece: For Arm, Leg, Back, Neck treatment area.**



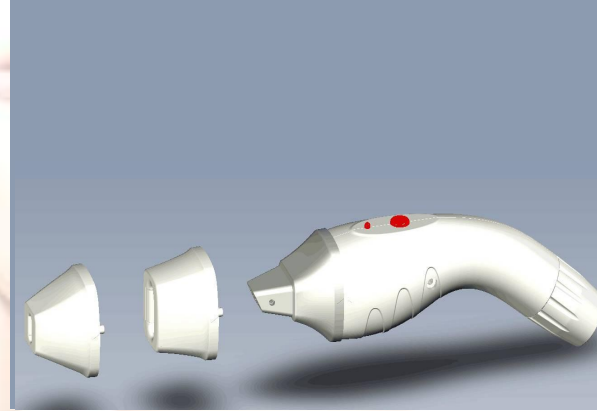
# Three Different Treatment Handpieces for Whole Body Treatment



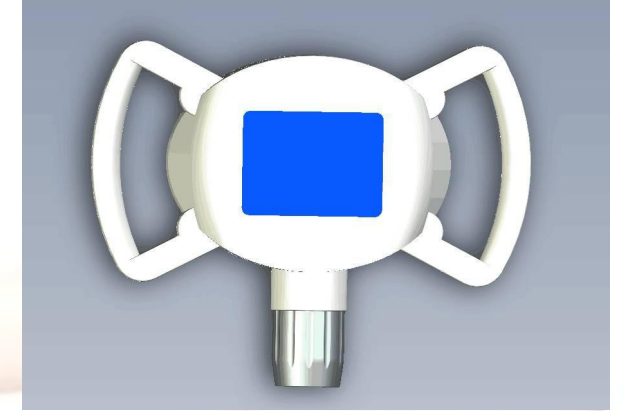
**Big Handpiece: For  
Abdomen, Flank, Buttock,  
Thigh treatment area.**



**Middle Handpiece:  
For Arm, Leg, Back,  
Neck treatment area.**



**For Face,  
Eye surrounding treatment area.**



**For whole body massage shaping**



## Specification

Screen:	12 inch touch screen
Working mode	Pulse
Laser wavelength	940nm
Total handles	4 handles 6 tips 123mm*88mm; 66*40mm; 43*30mm; 17*10mm; 14*9mm; 10*4mm (for face only)
Roller speed	0-36r/m
RF frequency	1MHZ
Cavitation Frequency	40KHZ
Vacuum intensity	30-85(Kpa)
Voltage	AC220V±10%, 10A 50Hz/AC110V±10%,10A 60Hz

S P E C I F I C A T I O N

# WHY CHOOSE US



## INCREASE DEMAND

Increased demand for non-invasive treatments



## STAY AHEAD OF THE MARKET

Keeping ahead of the market with latest Body Shaping Treatments for Men and Women



## WARRANTY

2 years warranty (except consumables), with whole life free service.



## TRAINING

User manual, operation video and online training through webcam for free



## TRAIN CERTIFICATION

Full Training and Certification for 4 people valued at \$1500



## SUPPORT

Professional service team with 24hours online service (Phone support)



## PROFESSIONAL MANUFACTURER

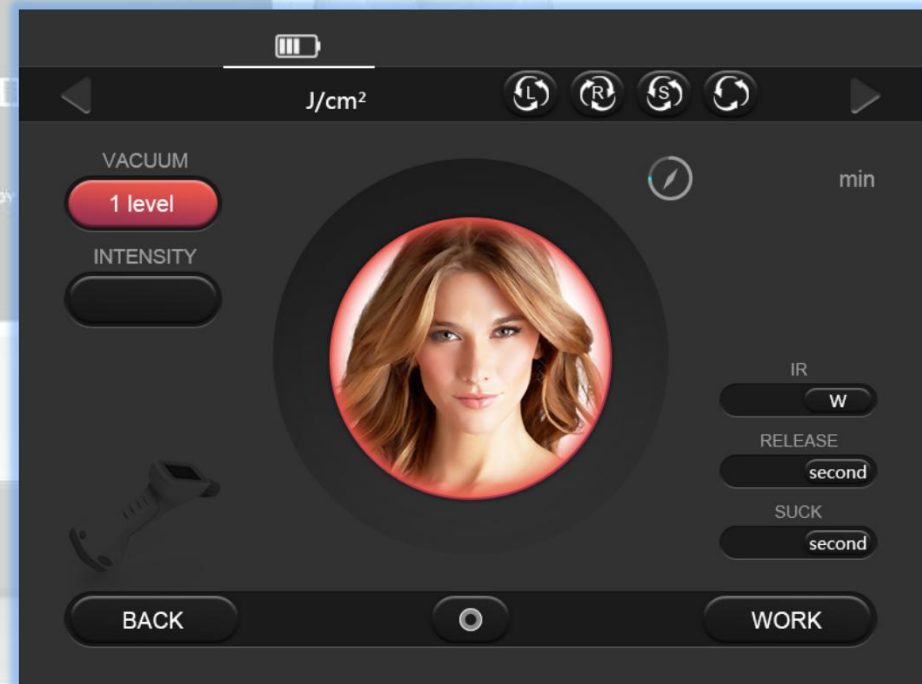
More than 10 years experience



## YOUR OWN BRANDING

Put your logo on the machine and screen if needed.

# UI Interface





## Who would be an ideal candidate for this treatment?

The treatment is recommended for normal to overweight patients who suffer from unsightly cellulite in the pelvic region, around the hips, abdomen, or lower limbs. For optimized results, these patients should also be committed to maintaining a healthy lifestyle. The treating clinician has the final determination for choosing the best candidates for the treatment.

## How many treatments needed?

For body and limbs, 8-10 treatments each session, each 4-5 days for one treatment, 30 minutes each treatment.  
For face, 10 treatments one session, once a week, 15-20 minutes each treatment.  
For eye wrinkle, 10 treatments one session, once a week, 15 minutes each treatment.

## How long the results will last?

We recommend 10 treatments as a session, there will be improvements differently after each treatment. Results can last up to a few years depending on age, lifestyle and hormonal changes, maintenance sessions are recommended to extend the effect of the results, we recommend once a month after desired results have been obtained. 1-5cm will be reduced on thighs, 2-6cm on abdomen and waists.

## What is the treatment procedure like?

We recommend 10 treatments as a session, there will be improvements differently after each treatment. Results can last up to a few years depending on age, lifestyle and hormonal changes, maintenance sessions are recommended to extend the effect of the results, we recommend once a month after desired results have been obtained. 1-5cm will be reduced on thighs, 2-6cm on abdomen and waists.





### **What will happen after treatment?**

Urinary output will be increased.  
feel thermal for 30minutes to an hour.

### **What should be noticed after treatment?**

Please avoid sunbath and tanning treatment.

### **Who can operate this machine?**

Any trained operator can use it.

### **Applications**

Neck lift, face lifting, improve crow' s feet, dark circles, eye bags, etc.  
Cellulite reduction for arms, legs, back, waists, abdomen.  
Body shaping after childbirth.  
Striae gravidarum reduction.

### **What are the contraindications ?**

There are no major contraindications for the treatment. For patients with pacemakers/de- fibrillator, pregnant or nursing or severe health problems, it is recommended to defer to their physician prior to commencing treatment.

# THANKS

**Welcome to consult more!**

---

**Head Office:** Office 509, Churchill Executive Tower, Al Amal St., Business Bay, Dubai,UAE  
**Phone:** +971 4 569 3474 **Mobile:** +971 50 912 4577 **Email:** [info@skyline-med.com](mailto:info@skyline-med.com)

