

ROLLASHAPE



SKYLINE
MEDICAL REQUISITES TRADING LLC



Lymphatic Drainage



Elimination of Orange Peel



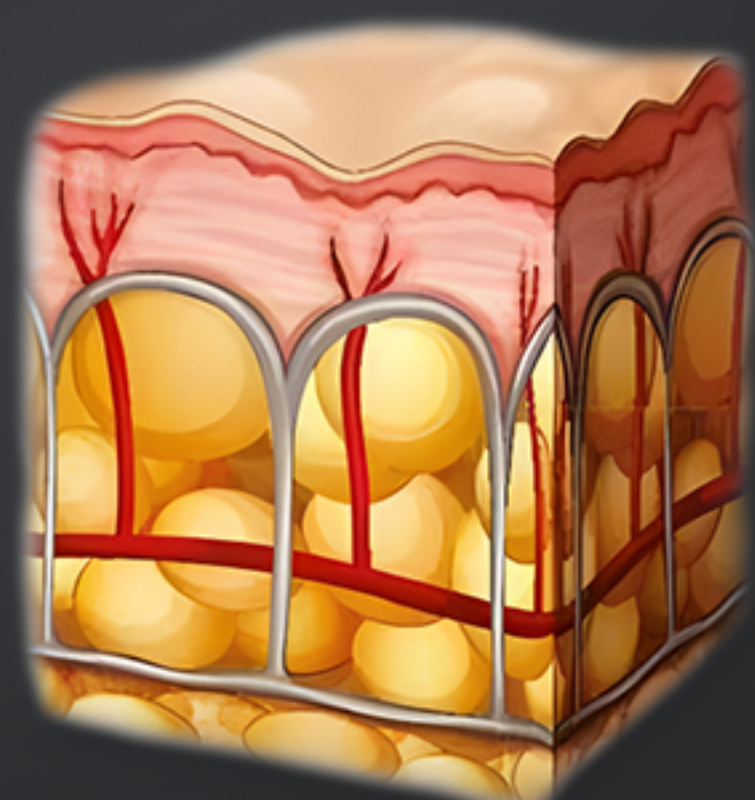
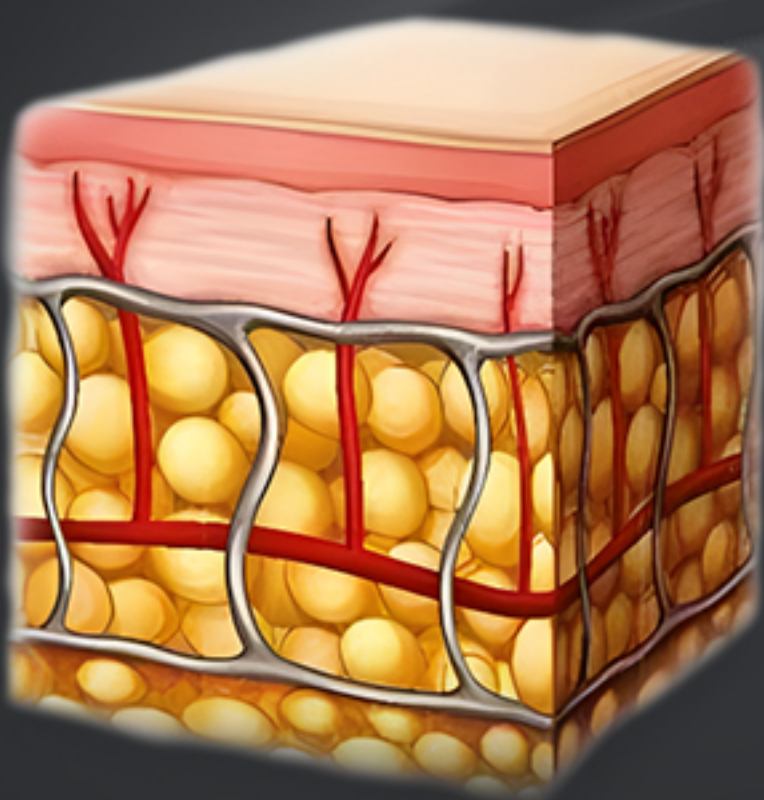
Promotion of Blood Circulation



01 PRINCIPLE

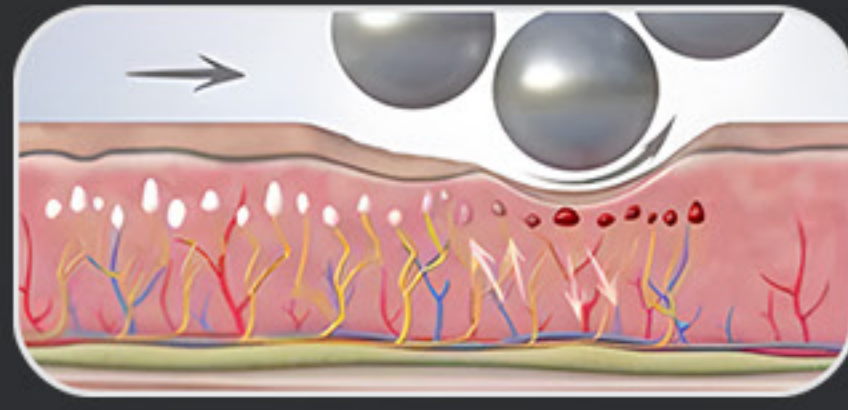


- The inner ball rotates 360° along the roller, resulting in compression micro-vibration.
- As the ball rotates and exerts pressure on the skin it will produce a "pulsation compression" effect, realizing continuous push-pull motions.
- And the tissue will experience some pressure and lifting action, the tissue is exerted pressure to stretch the cells to naturally and deeply stimulate cell activity, blood flow and oxygenation, fat deposits are pressurized and thus loosened to finally decompose. so as to reduce cellulite and remove cellulite thereby improving orange peel skin and making skin smoother.



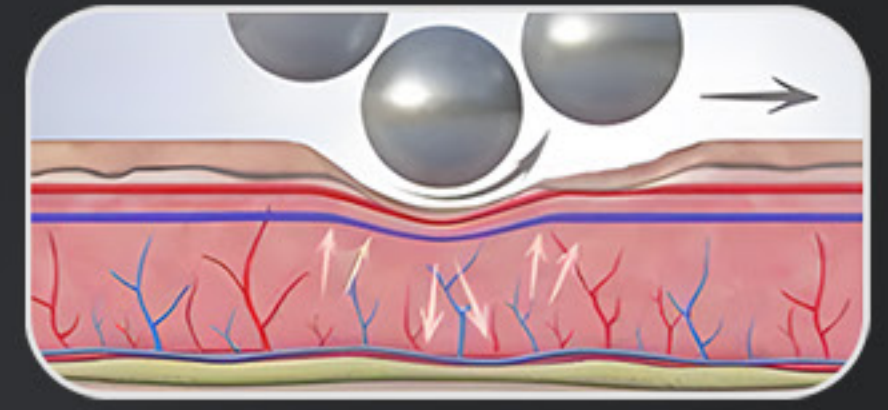
PRINCIPLE

5 ACTIONS



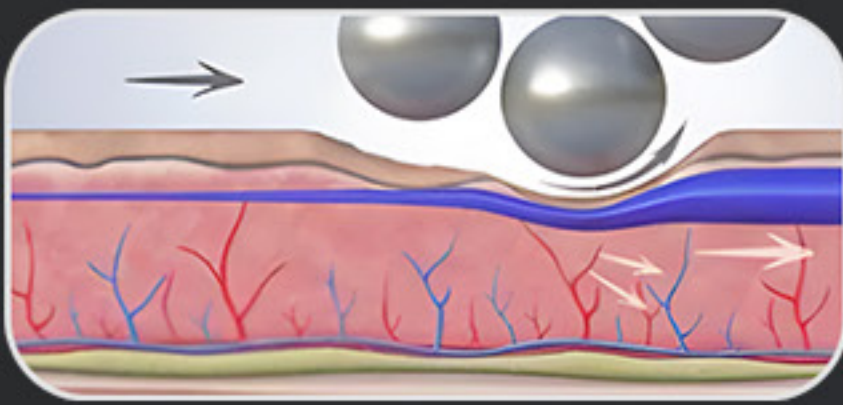
Sedation

Improve oxygen and eliminate pain.



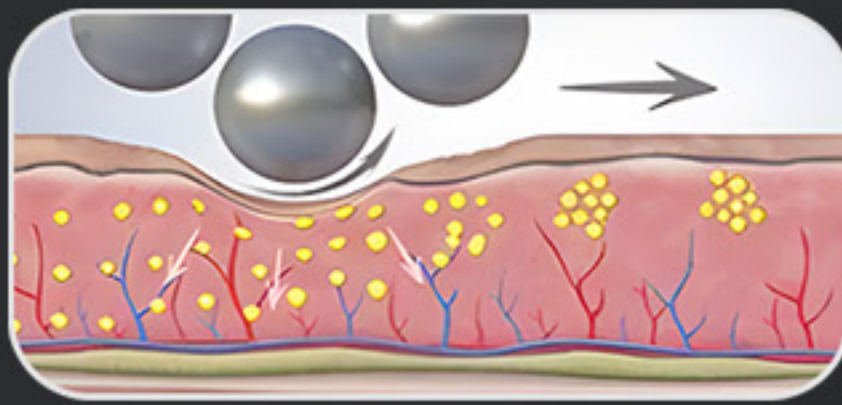
Vascular effect

Improve blood circulation and nourish tissues.



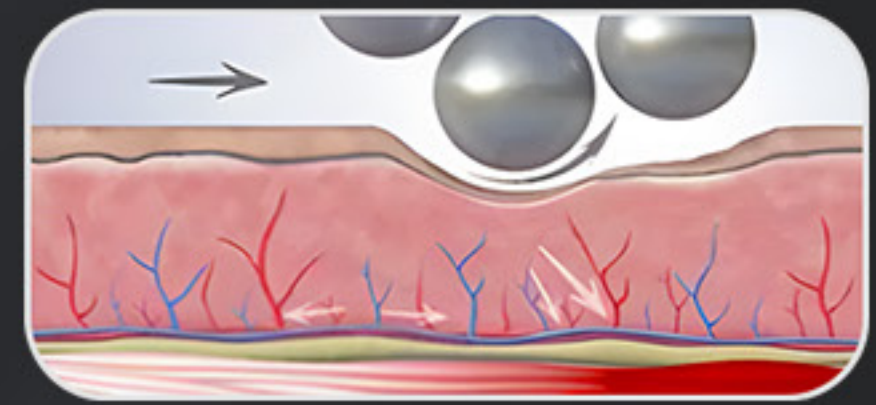
Drain action

Eliminate toxins and help lymphatic drainage.



Reshaping action

Reshapes contours and smooths out wrinkles.



Muscle action

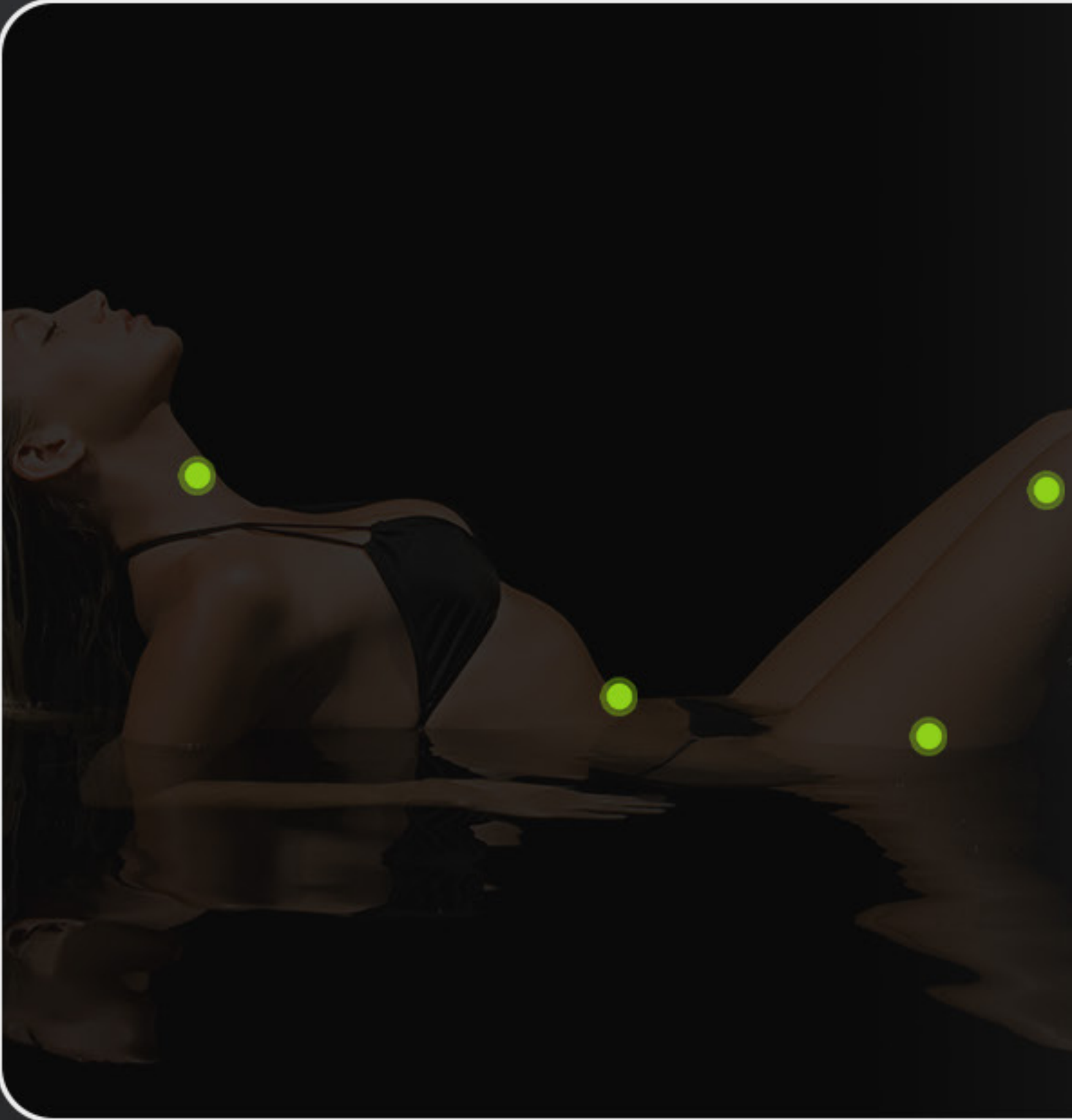
Tones muscles and tightens tissues.

BEFORE	ACTION	AFTER
Slowing down of lympho-venous microcirculation of affected areas	Analgesic effect	Reduction of stagnating liquids and elimination of toxic substances
Tissue Inflammation. stagnation of toxic substances and sclerosis	Vascularising effect	Reduction of tissue tenderness
Reduction of arteriolar microcirculation with dermal-epidermal temperature reduction	Draining effect	Improvement of microcirculation and temperature increase
Metabolic-structural alterations of connective tissue	Reshaping effect	Removal of skin imperfections
Alterations of muscular structure	Toning effect	Deep, firm, toned muscle base

Treatment Range

BODY

TOP TO TOE TREATMENTS



Sculpts the body



Smooths cellulite



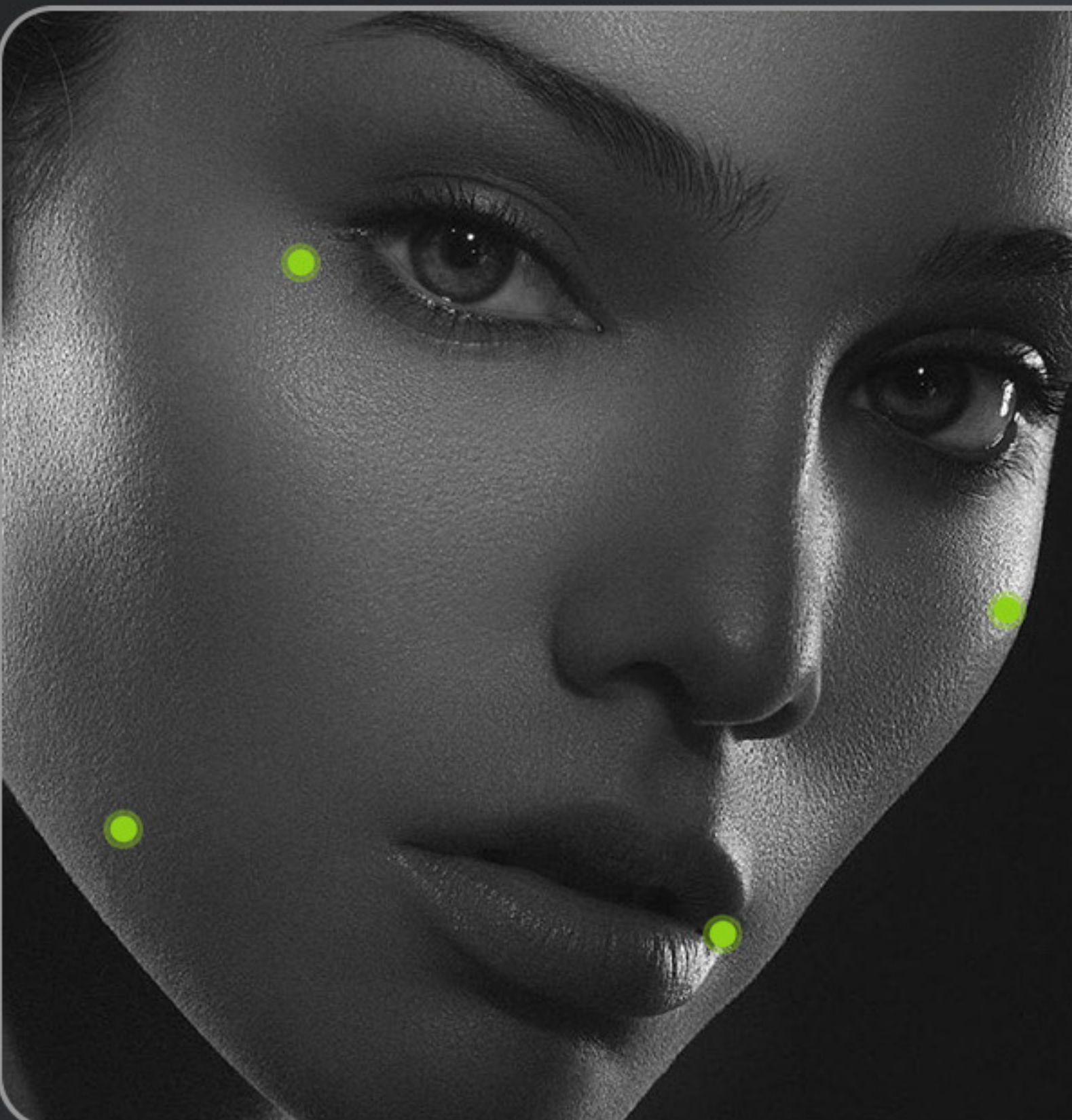
Fights heaviness in the legs



Tones the skin

FACE

COMPLEXION PERFECTION



Smooths wrinkles



Illuminates the complexion



Relaxes and tones the muscles



Shapes the lips

FUNCTION

- Improve the orange peel skin
- Regulates the lymphatic system
- Increase skin smoothness
- Improve microcirculation
- Relax muscles
- Reduce pain



OPERATION

Each treatment lasts 30 minutes. Twice a week. 12 times



1、 **BEFORE**

Set parameters according to the customer's tolerable range and then clean the operating part

2、 **DURING**

Sufficient essential oil should be ensured at the operating site.

The working head should keep tight to the operation part and roll repeatedly in the orange peel tissue part

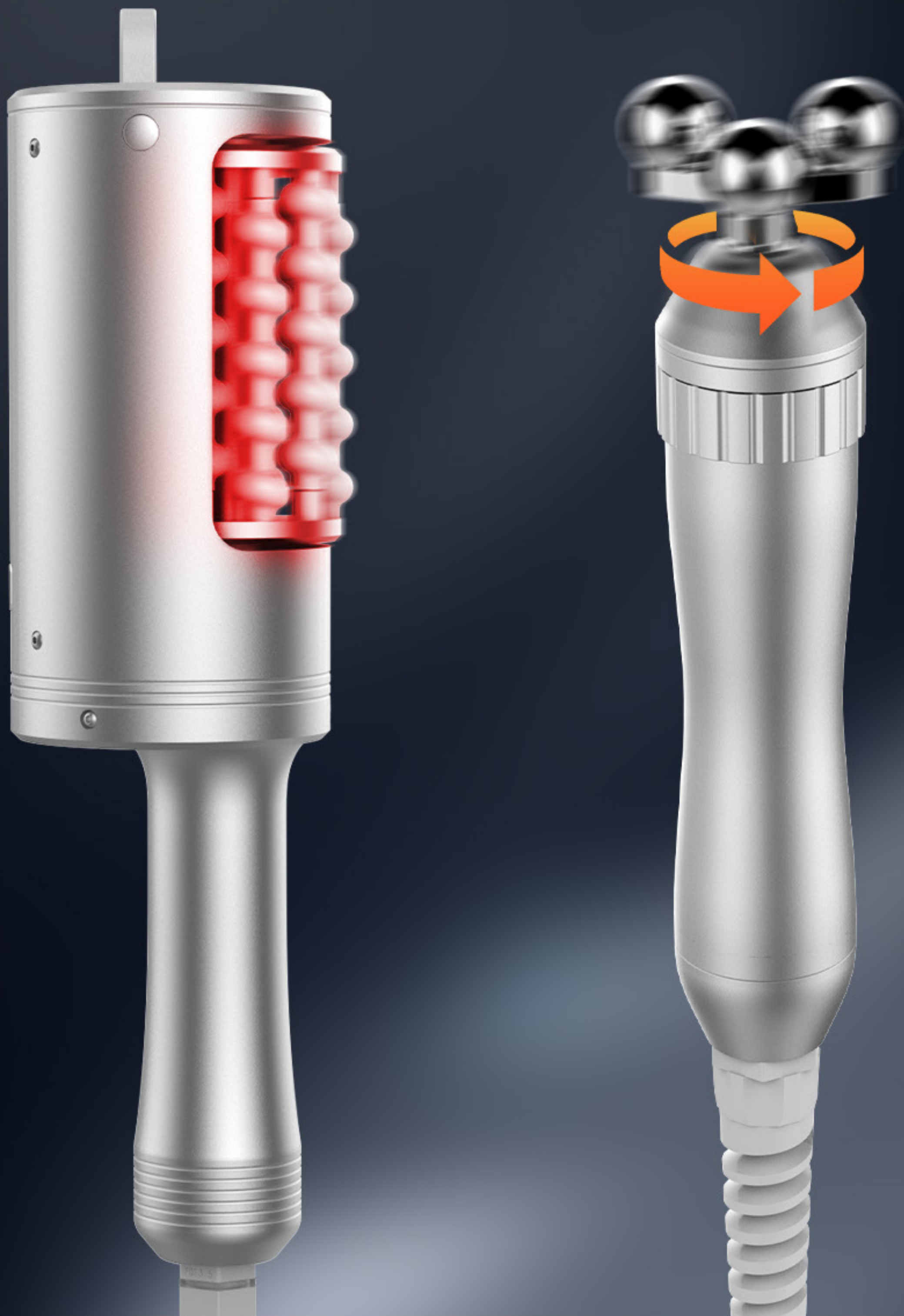
3、 **AFTER**

Clean the operating part and the mechanical vibration head should be removed and cleaned

SEQUENCE

The mechanical vibration handle & The mechanical rotation handle

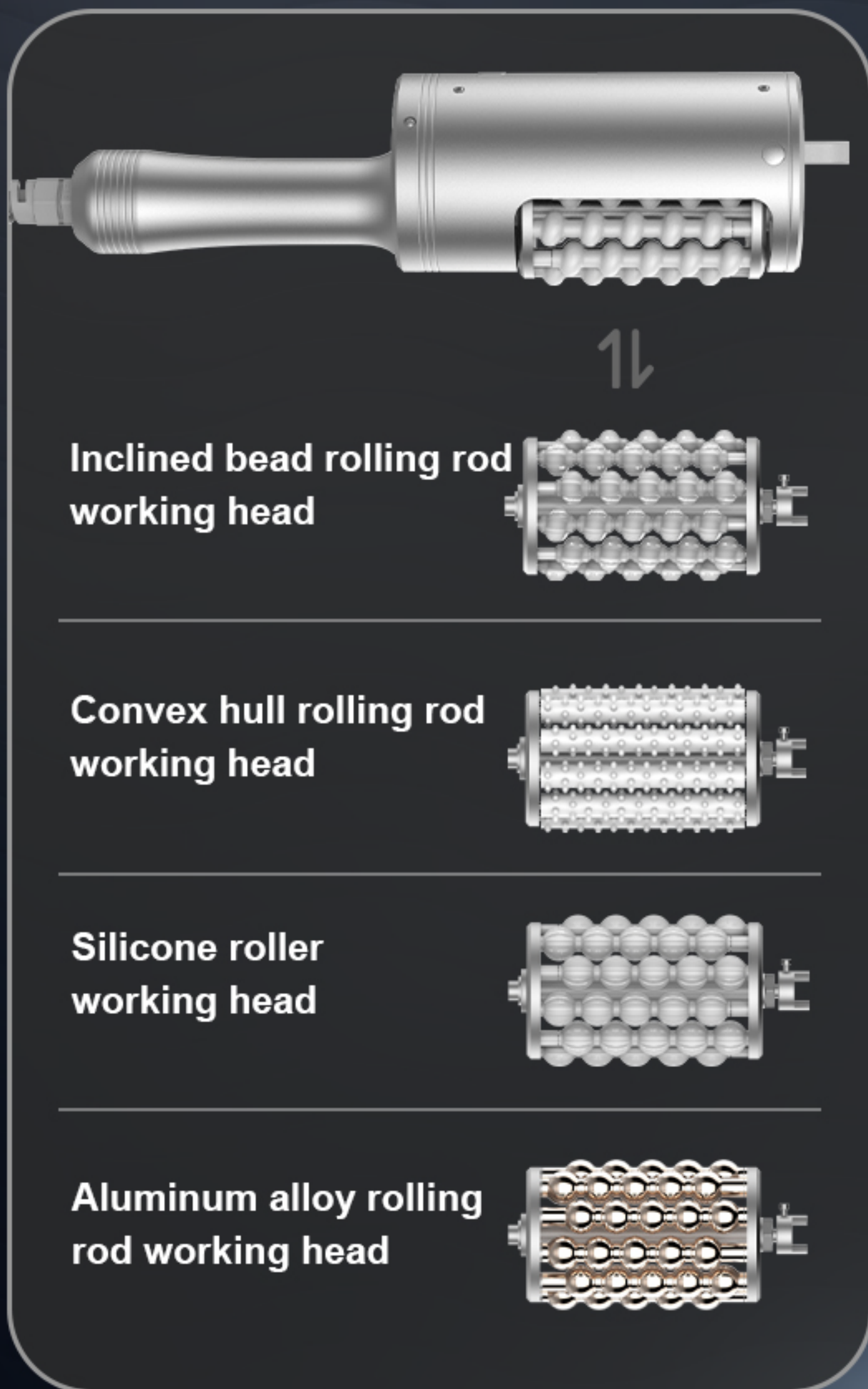
Red light wavelength: **650-660NM** Speed: **10-100%**, Speed frequency: **30-270**



- Different working heads are targeted to different level of the orange peel cellulite and have different body feeling.
- For the thick fat or relatively stubborn orange peel tissue, we recommend a combination of them, using the mechanical rotation first and then using the mechanical vibration.
- For relatively mild orange peel phenomena, we recommend vibration directly.

ACCESSORIES

The mechanical vibration handle



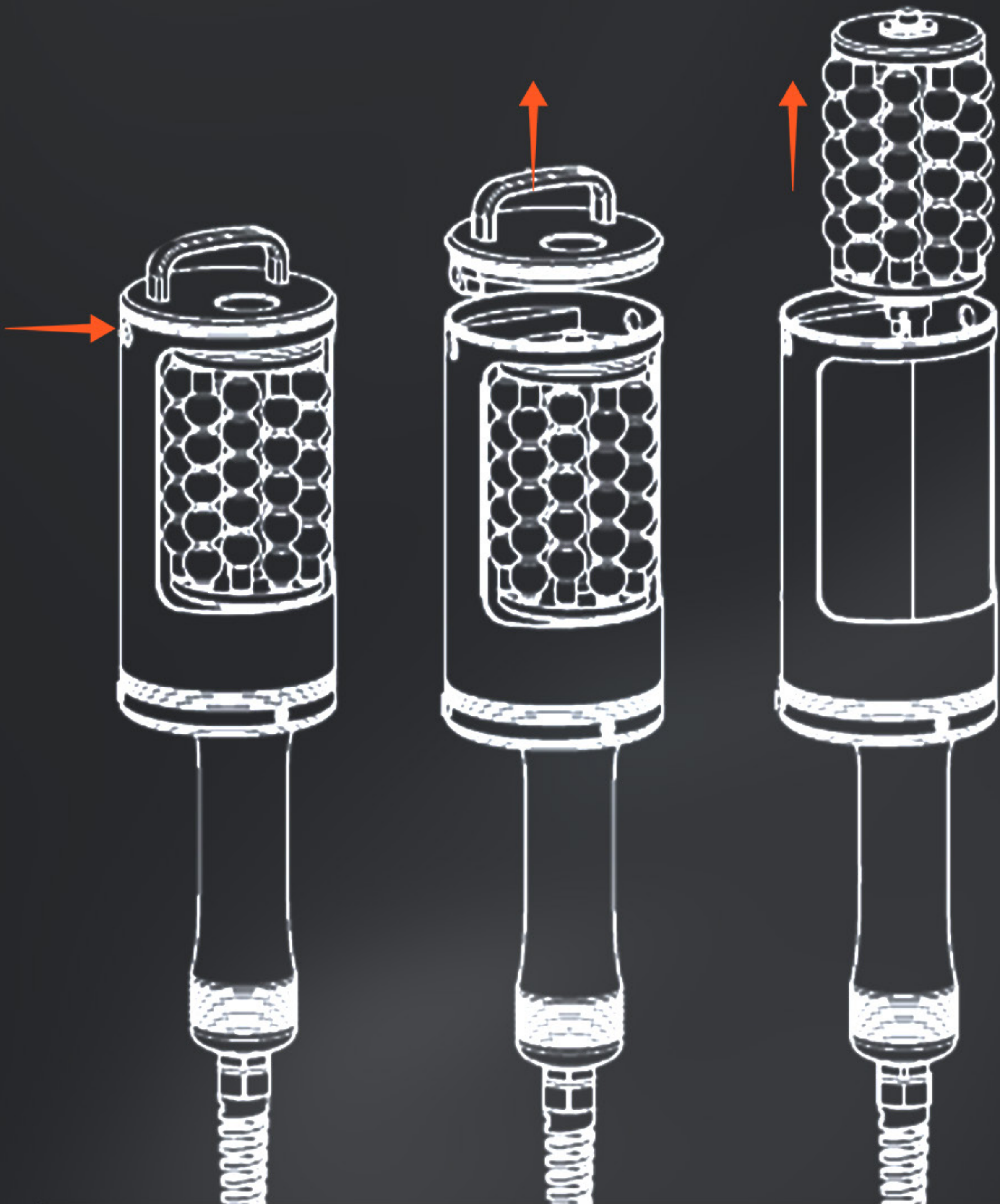
The mechanical rotation handle



Vertical type & Desktop

Working head replacement

Disassembly and replacement of **large handle** working head



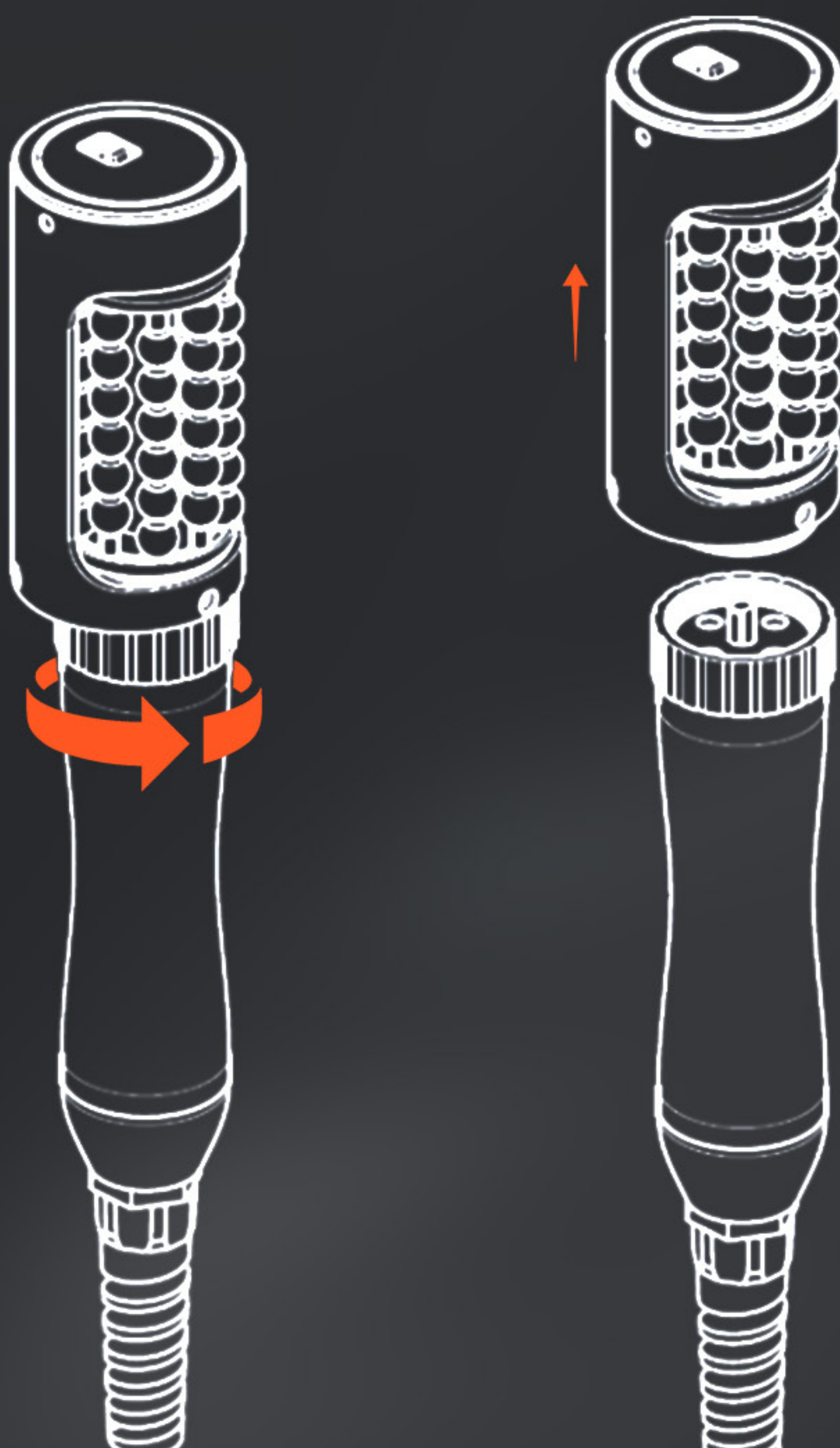
Press down the buttons on both sides at same time with thumb and forefinger

Pull out the upper cover

Fixed the body with one hand
Held the working head with another hand and slowly Pull out the workinghead slowly with force

Working head replacement

Disassembly and replacement of **small handle** working head:

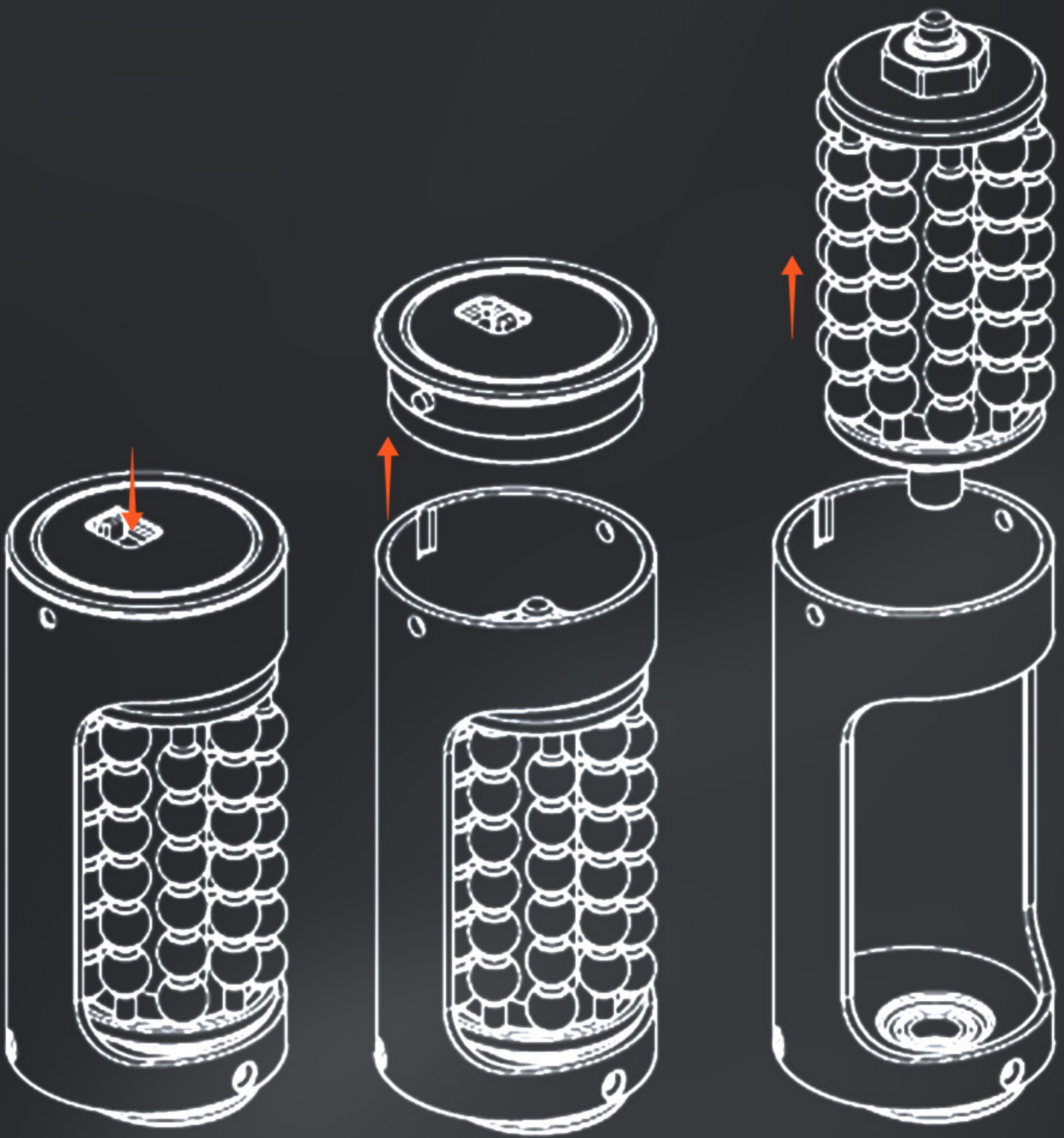


Loosen the
locking ring clockwise

The working head will
be released

Working head replacement

Disassembly and replacement of **small handle** working head:



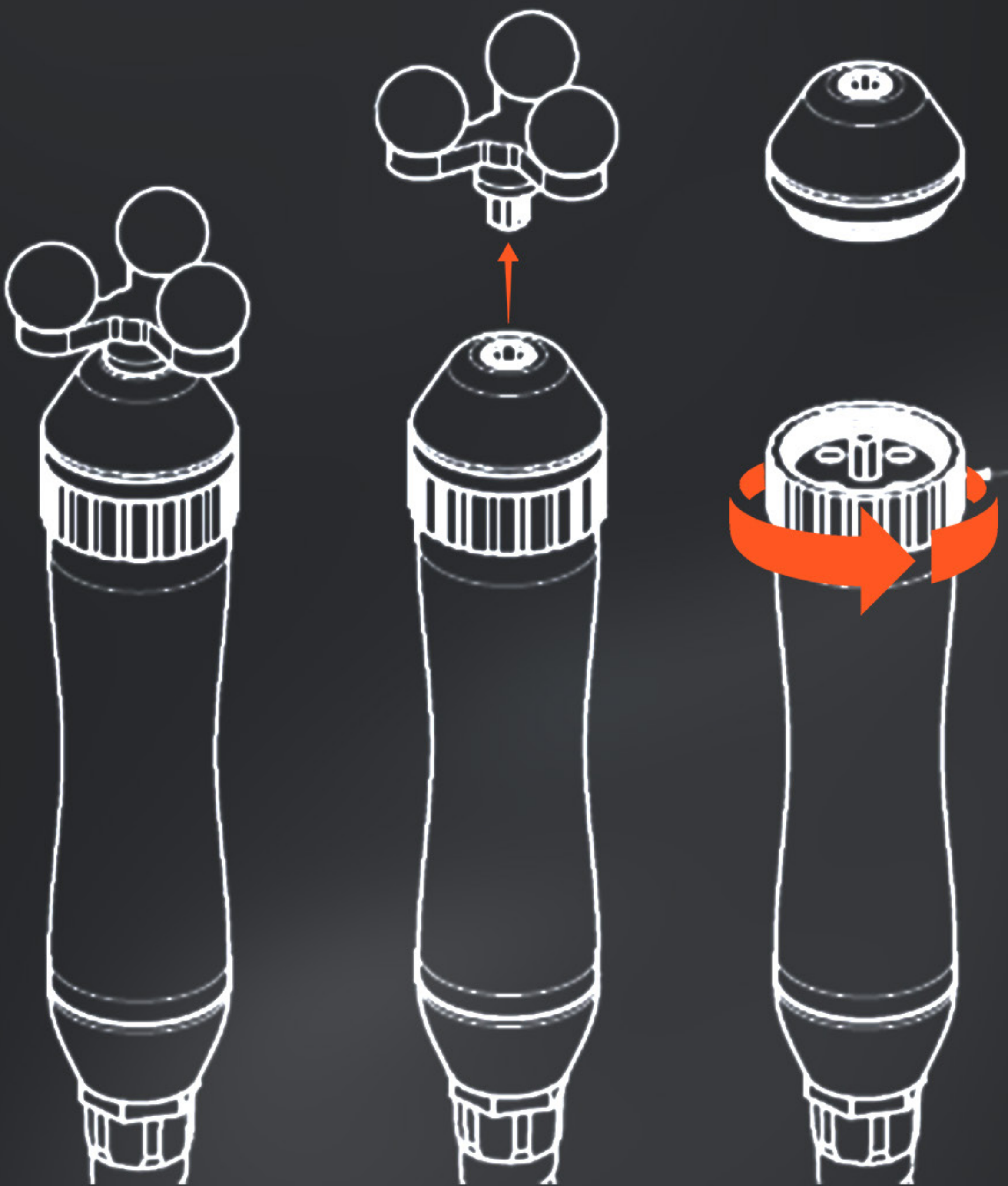
Push
the button

Pull out
the upper cover

Pull out
the working head

11 Working head replacement

Disassembly and replacement of **rotate handle** working head:



Pull hard removable
working head

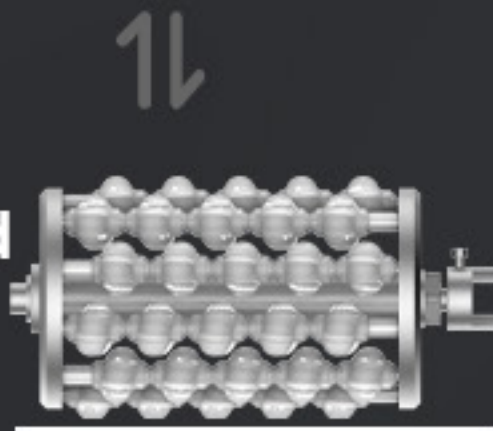
Loosen the locking ring clockwise
Removable working head connector

12 Handle size

Dimensions of working head with large handle

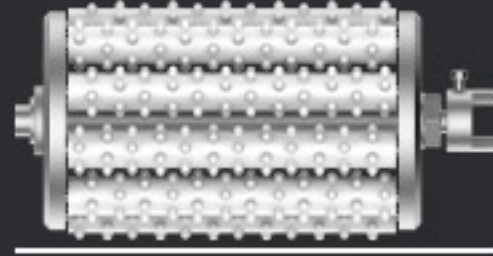


Inclined bead rolling rod working head



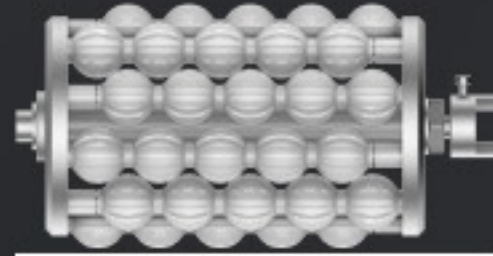
Size:156.5*80mm

Convex hull rolling rod working head



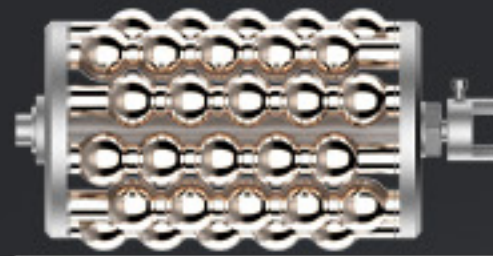
Size:156.5*80mm

Silicone roller working head



Size:156.5*80mm

Aluminum alloy rolling rod working head



Size:156.5*80mm

Dimensions of working head with rotary and small handle



289.5*72.5mm



290.5*54.5mm



287*36mm



BEFORE & AFTER

Body treatment

Sculpts the body



Smooths cellulite



Fights heaviness in the legs



Tones the skin



Facial treatment

Smooths wrinkles



Illuminates the complexion



Relaxes and tones the muscles



Shapes the lips