

# Dolphin

Full-metal integrated design  
High light intensity Built-in light meter



## Technical parameter

- Four curing modes**  
Turbo, Normal, Ortho, Check
- Input**  
100-240VAC 50Hz/60Hz
- Light intensity**  
1000mW/cm<sup>2</sup>-2500mW/cm<sup>2</sup>
- Wavelength**  
385nm-515nm
- Output**  
DC 5V/1.0A
- Battery**  
2600mAh

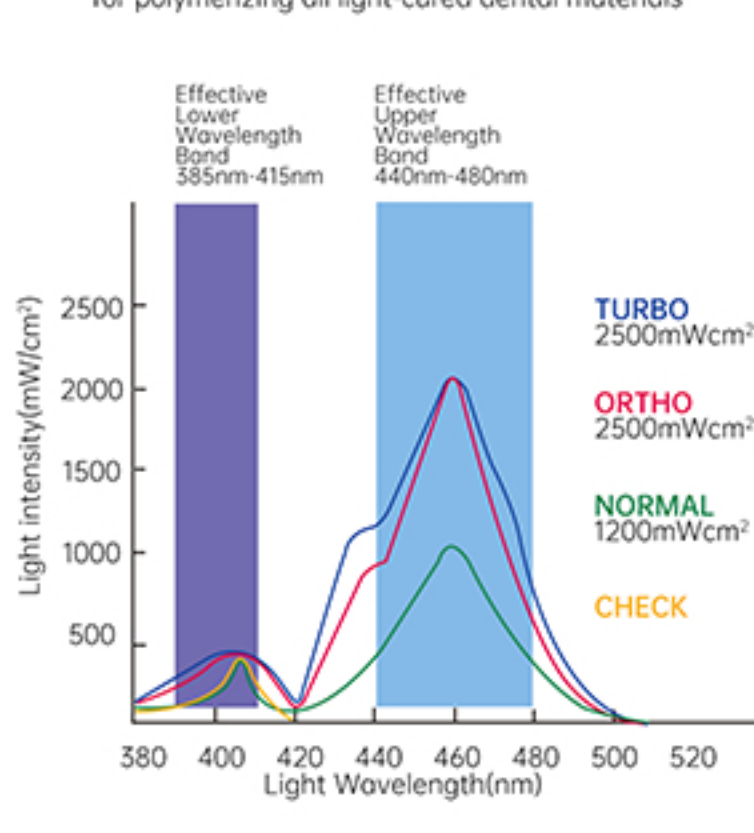
## Comfortable user experience

Full-metal body, ergonomically-streamlined design  
light and durable



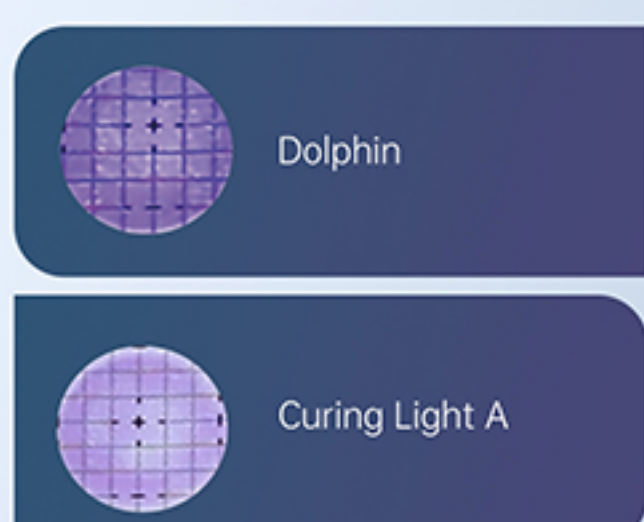
## Wide spectrum

The new generation multiwavelength LED helps to produce high-intensity light at 385nm-515nm for polymerizing all light-cured dental materials



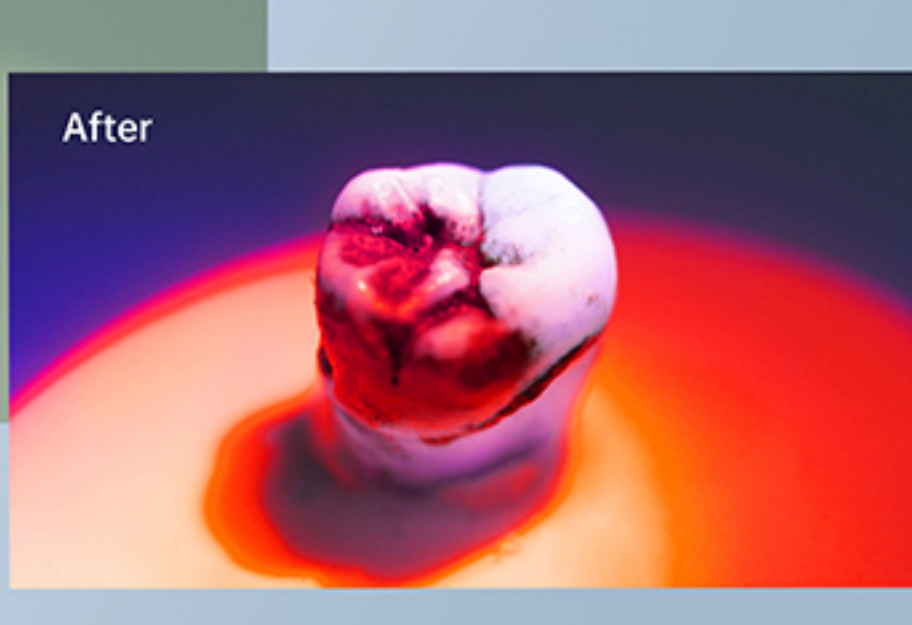
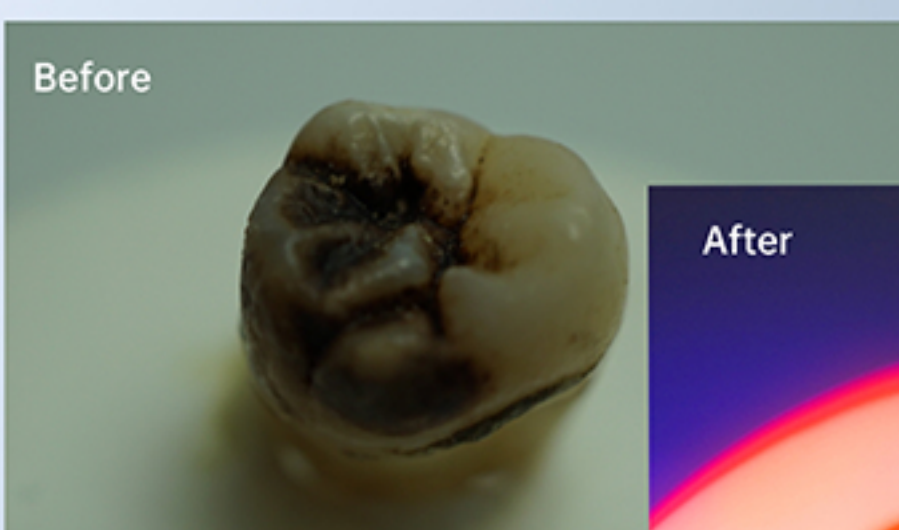
## Collimated light beams

With refined optics that create excellent light collimation across a 10mm lens  
Dolphin curing light delivers optimally and consistently collimated power



## Caries detection

Caries detection function available  
orange can be shown if hidden caries are detected

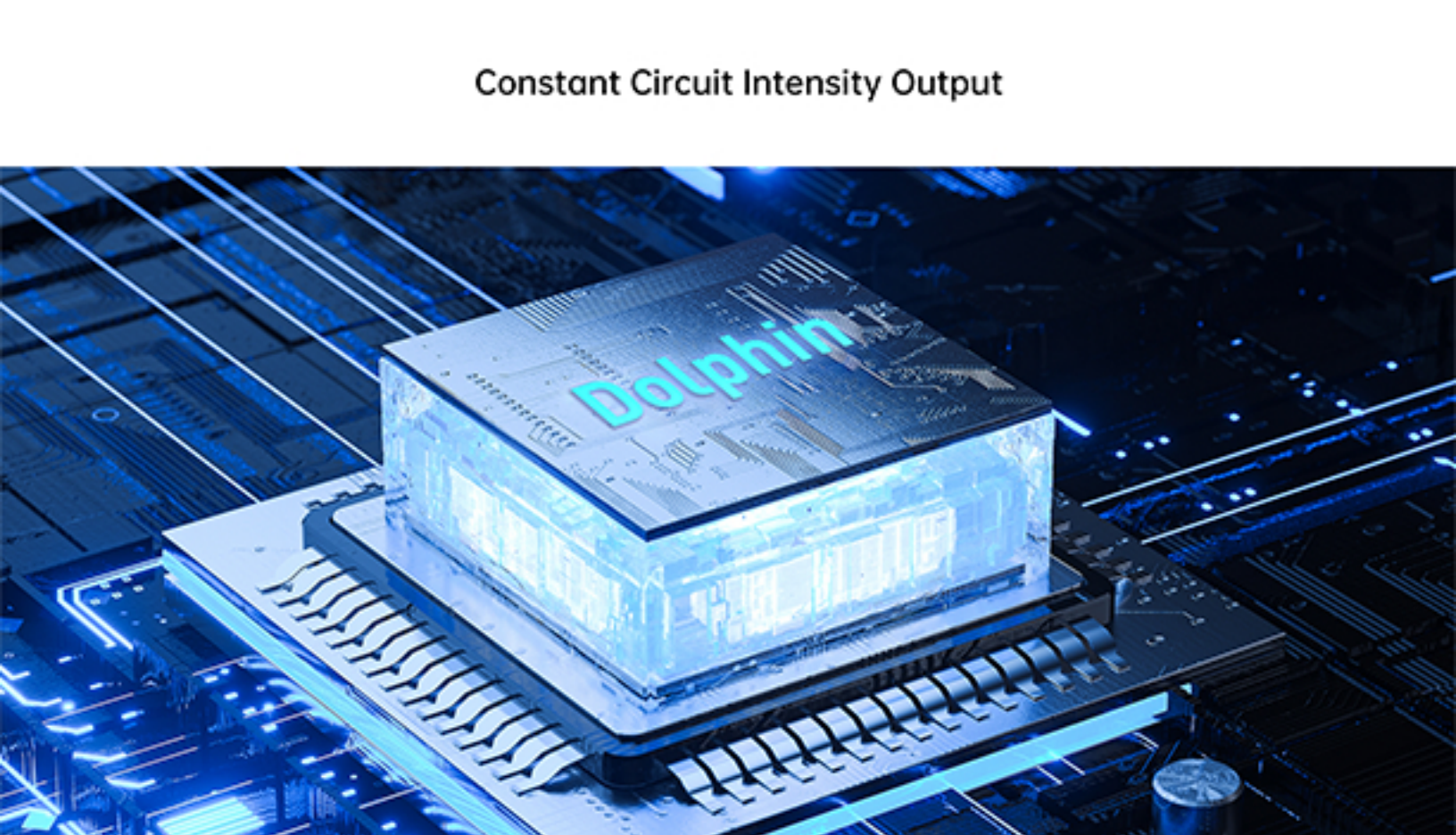


## Built-in light meter

Built-in light meter available in the charging base  
light intensity can be tested at any time



## Constant Circuit Intensity Output



## Optional lens

### Microcure Ball Lens

Facilitates the building of convex proximal contacts. The imprint is easily filled with composite in a second step, push the Proxecure Ball Lens against the interproximal wall of the bond, do not submerge in composite.



### Microcure Lens

It provides pinpoint curing of small composites and is helpful for tack curing veneers.



### Endo Guide Lens

The Mini Light Guide is suitable for curing apex position of the tooth and other limited areas.

