



Technical specifications

Intended use	Scaling				
Indications for use	Subgingival scaling				
Description	Scaling pockets < 2-3mm. Supra-gingival scaling for children and shallow pocket scaling.				
Tip type	Smooth				
Allergenic factor	Tip made of surgical stainless steel as per ASTM F899 - 12b Surgical stainless steel contains: <ul style="list-style-type: none">• nickel• chromium				
Commercial reference	10P : F00253				
Medical class	Class of medical device: IIa according to 93/42/EEC directive				
Adjustments	Newtron range	P5 Range	Suprasson P5 Booster	Prophy Max - P-Max - Implant Center 2 - Piezotome 2	Irrigation
	14	14	10	5	

Service life

As it is not possible to establish a maximum number of uses (that may be determined by many parameters such as duration of use, hardness of enamel, the force applied, wear), we recommend that medical devices being routinely used are replaced at least once a year. Replace the medical device if the tip does not vibrate at the expected frequency, the treatment is not progressing as normal and is taking longer or is at a standstill.

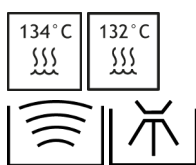
Associated documentation

Document title	References
Consulting electronic user instructions	J00007
Cleaning, disinfection and sterilisation instructions for tips	J02001
Scaling clinical tips	J08011
Ultrasonic generator power settings table	J58000
General instructions relating to the complete range of standard ultrasonic dental tips	J02101

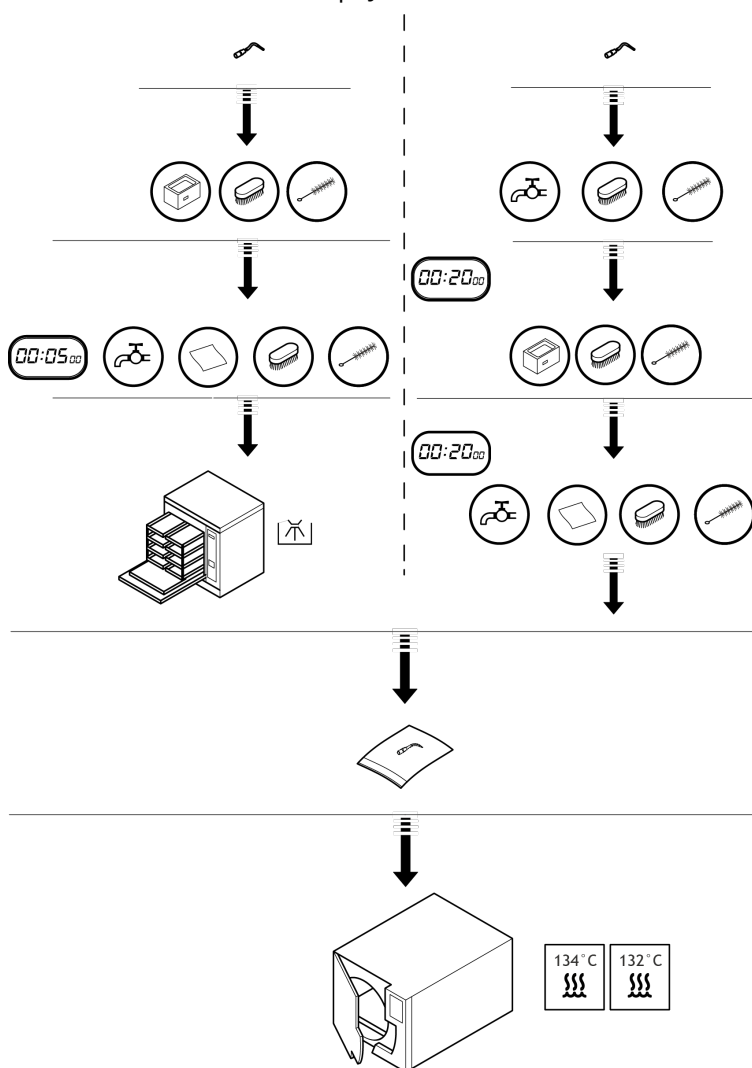
Sterilisation



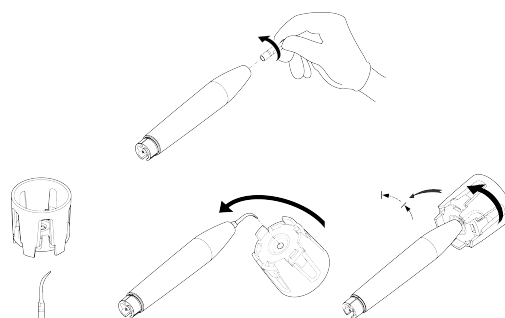
Sterilise prior to each use



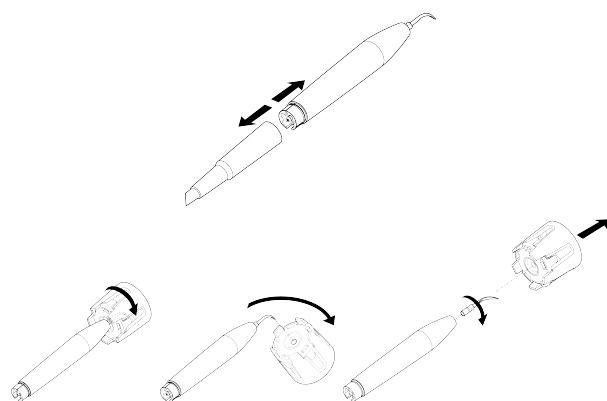
The tips must be cleaned, disinfected and sterilised prior to each use. Prior to each use, please refer to the cleaning, disinfection and sterilisation instructions for tips J02001.



Installation



Disassembly



Manufacturer identification



SATELEC
A Company of ACTEON Group
17, avenue Gustave Eiffel
BP 30216
33708 MERIGNAC cedex
France
Tel. +33 (0) 556.34.06.07
Fax: +33 (0) 556.34.92.92
E.mail: satelec@acteongroup.com.
www.acteongroup.com



Date of first CE marking

1998

Tip | 10P | J00141 | (98) | V1 | 03/2017 | NB10EN010A

SATELEC S.A.S. | A Company of ACTEON Group
17 av. Gustave Eiffel | BP 30216 | 33708 MERIGNAC cedex | FRANCE
Tel. +33 (0) 556 34 06 07 | Fax. +33 (0) 556 34 92 92
E-mail: satelec@acteongroup.com | www.acteongroup.com

Download



Instructions For Use

