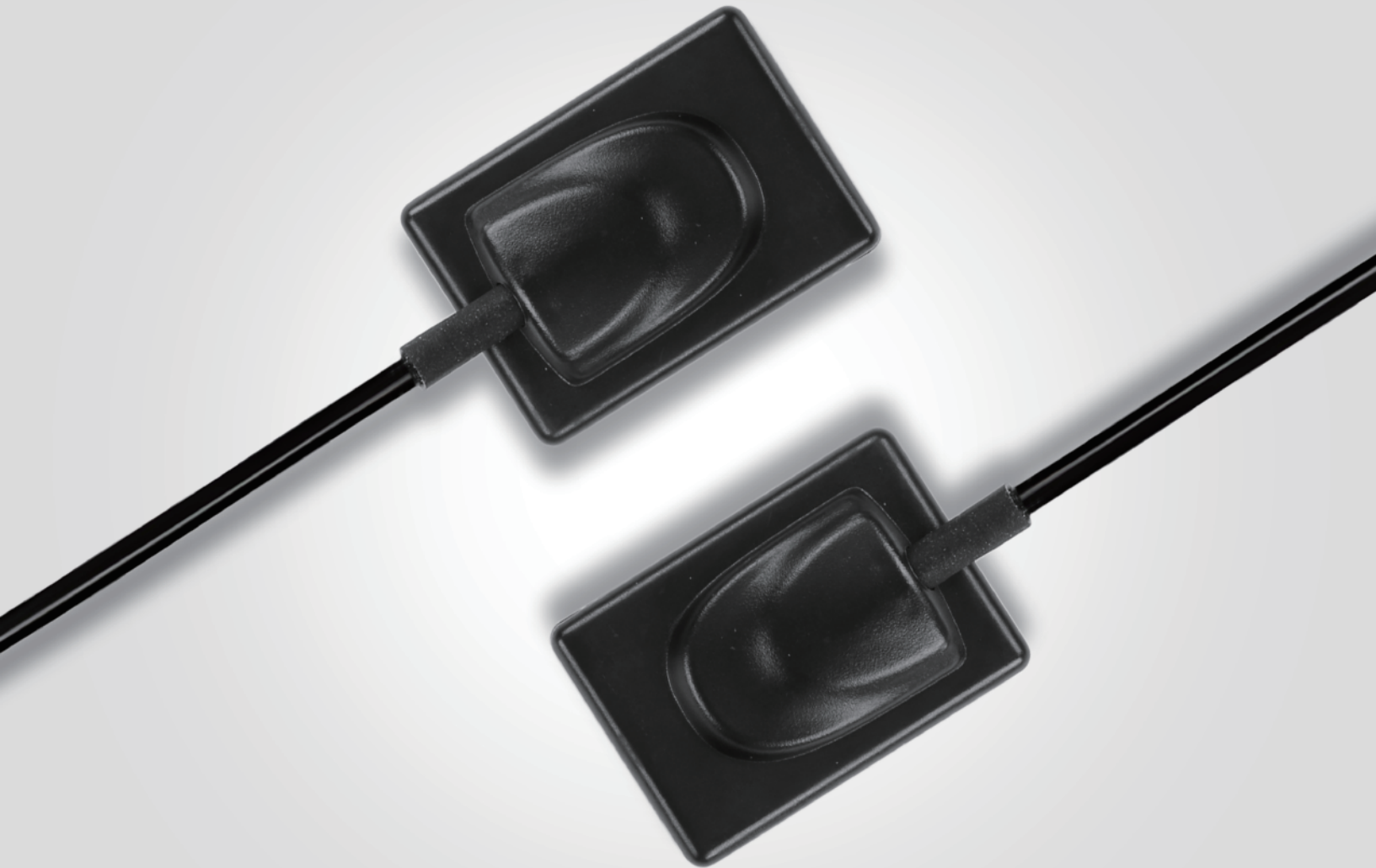


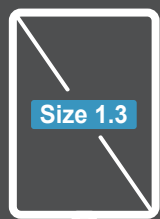
See The Unseen

DR730 Dental Imaging System

15 Years Dental X Ray Imaging Experience



Runyes®
FOCUS ON DENTAL



Comfortable Experience With Full Tooth Imaging



Full-Tooth
Imaging



High-Definition
Imaging



APS CMOS
Sensor



Powerful
Software



IPX7



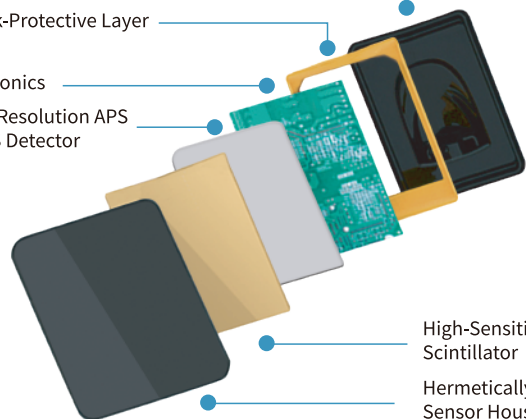
Powerful Functions

Hermetically Sealed
Sensor Housing

Shock-Protective Layer

Electronics

High-Resolution APS
CMOS Detector

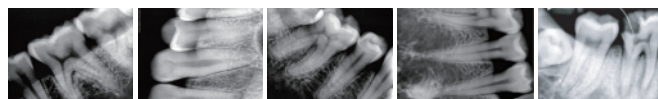


High-Sensitivity
Scintillator

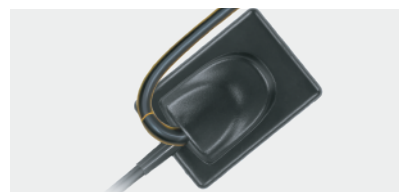
Hermetically Sealed
Sensor Housing



HD Imaging



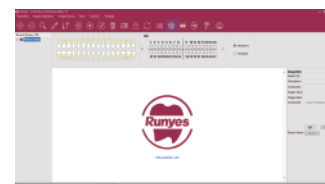
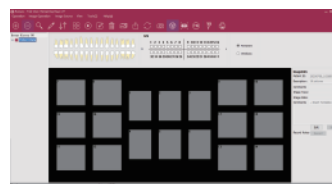
Super Toughness



Tens of thousands of tests
have been carried out
according to the actual use,
and the product has super
toughness and durability.



Powerful Image Management Software



High Adaptability

Available For Liquid Disinfectant Immersion Disinfection



The sensor is tightly stitched
Repeated verification by engineers
Reach IPX7 waterproof level
Can be disinfected with immersion
Avoid secondary cross infection

Compatibility

Applicable for almost
all x-ray machines on the market

Parameters

Model	DR730
Chip Type	APS CMOS
Pixel Size	18.5um
Dimension	39×28.5×6mm
Active Area	30×22.5mm
Active Pixel Array	1600×1200mm
Image Pixel	1604×1204mm
Voltage (through USB connection)	5.0V±0.5V
Electricity Current(through USB connection)	≤500mA
Power	≤1W
Digitization	12/14/16 bit
Imaging Time	3~4s
Resolution	27lp/mm
Signal Output	USB

Runyes®
FOCUS ON DENTAL

Runyes Medical Instrument Co.,Ltd.

No. 456, Tonghui Road, Jiangbei Investment
& Pioneering Park C, Ningbo, China



+86-574-27709922



+86-574-27709923



[Http://en.runyes.com](http://en.runyes.com)



runyes@runyes.com