



## Technical specifications

Intended use	Conservative and Restorative Dentistry				
Indications for use	Minimal excavation and macro-abrasion				
Description	Diamond-coated, right-angled half-spherical tip to access the lesion without damaging the adjacent tooth				
Tip type	Diamond-coated				
Allergenic factor	Tip made of surgical stainless steel as per ASTM F899 - 12b  Surgical stainless steel contains: <ul style="list-style-type: none"><li>• nickel</li><li>• chromium</li></ul> Diamond polishing crimping binder alloy contains: <ul style="list-style-type: none"><li>• nickel</li></ul>				
Commercial reference	EXR : F02043				
Medical class	Class of medical device: IIa according to 93/42/EEC directive				
Adjustments	Newtron range	P5 Range	Suprasson P5 Booster	Prophy Max - P-Max - Implant Center 2 - Piezotome 2	Irrigation
	12	12	9	2	

## Service life

As it is not possible to establish a maximum number of uses (that may be determined by many parameters such as duration of use, hardness of tissue, the force applied, wear), we recommend that medical devices being routinely used are replaced at least once a year. Replace the medical device if the tip does not vibrate at the expected frequency, the treatment is not progressing as normal and is taking longer or is at a standstill.

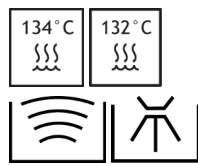
## Associated documentation

Document title	References
Consulting electronic user instructions	J00007
Cleaning, disinfection and sterilisation instructions for tips	J02001
Excavus Kit clinical tips	J08141
Ultrasonic generator power settings table	J58000
General instructions relating to the complete range of standard ultrasonic dental tips	J02101

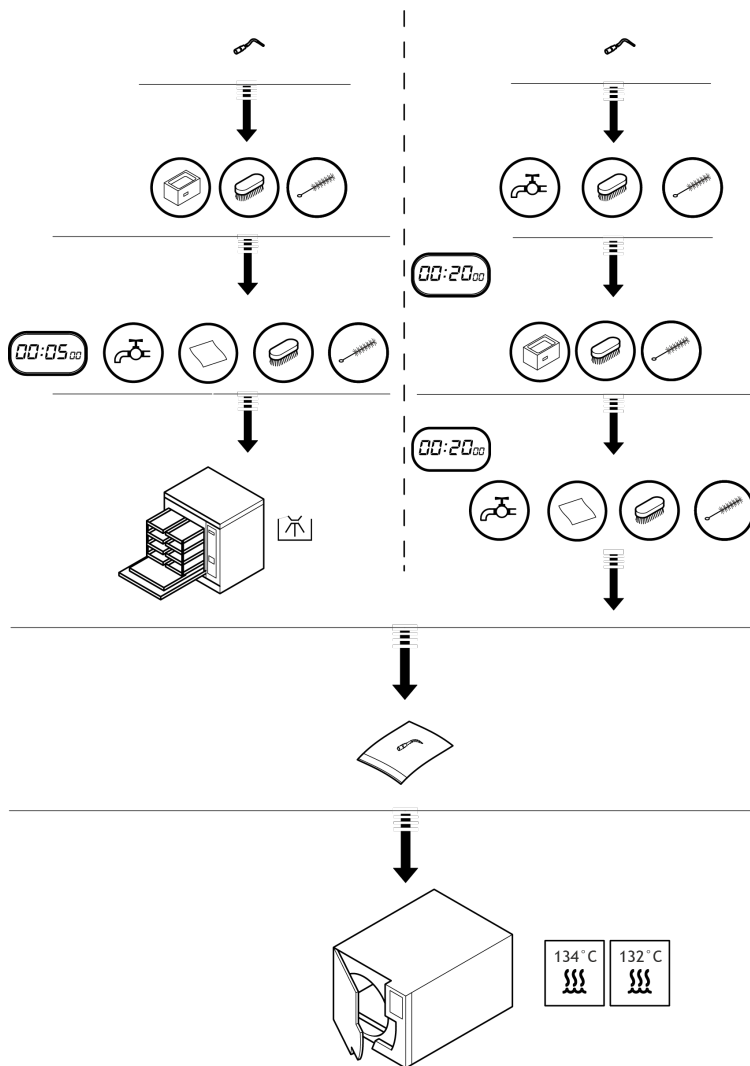
## Sterilisation



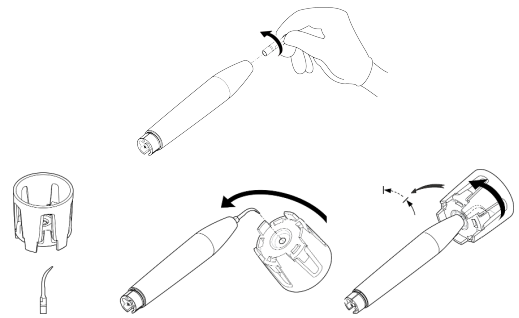
Sterilise prior to each use



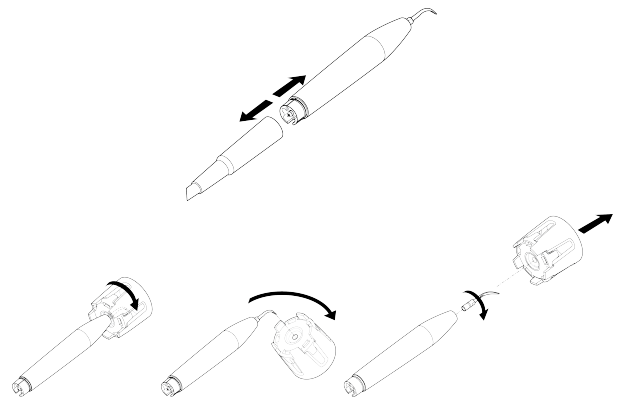
The tips must be cleaned, disinfected and sterilised prior to each use. Prior to each use, please refer to the cleaning, disinfection and sterilisation instructions for tips J02001.



## Installation



## Disassembly



## Manufacturer identification



SATELEC  
A Company of ACTEON Group  
17, avenue Gustave Eiffel  
ZI du Phare  
33700 MERIGNAC  
France  
Tel. +33 (0) 556.34.06.07  
Fax. +33 (0) 556.34.92.92  
E.mail : satelec@acteongroup.com  
www.acteongroup.com



## Date of first CE marking

1998



The practitioner has to continually monitor the clinical site to immediately identify any heating risk.

Tip | EXR | J00591 | (98) | V3 | 05/2021 | NB26EN050C

SATELEC | A Company of ACTEON Group  
17 av. Gustave Eiffel | ZI du Phare  
33700 MERIGNAC | FRANCE  
Tel. +33 (0) 556 34 06 07 | Fax. +33 (0) 556 34 92 92  
satelec@acteongroup.com | www.acteongroup.com

Download



Instructions For Use

