



# S12-70D

## Technical specifications

Intended use	Endodontics				
Indications for use	Retro preparation of cavities and isthmuses				
Description	Angled retro tip for the treatment of posterior zones in canals with difficult access or unusually angled roots				
Tip type	Smooth				
Allergenic factor	Tip made of surgical stainless steel as per ASTM F899 - 12b  Surgical stainless steel contains: <ul style="list-style-type: none"><li>• nickel</li><li>• chromium</li></ul>				
Commercial reference	S12-70D : F00118				
Medical class	Class of medical device: IIa according to 93/42/EEC directive				
Adjustments	Newtron range	P5 Range	Suprasson P5 Booster	Prophy Max - P-Max - Implant Center 2 - Piezotome 2	Irrigation
	7	7	5	3	

## Service life

As it is not possible to establish a maximum number of uses (that may be determined by many parameters such as duration of use, hardness of tissue, the force applied, wear), we recommend that medical devices being routinely used are replaced at least once a year. Replace the medical device if the tip does not vibrate at the expected frequency, the treatment is not progressing as normal and is taking longer or is at a standstill.

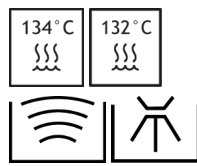
## Associated documentation

Document title	References
Consulting electronic user instructions	J00007
Cleaning, disinfection and sterilisation instructions for tips	J02001
Apical Surgery clinical tips	J08061
Ultrasonic generator power settings table	J58000
General instructions relating to the complete range of standard ultrasonic dental tips	J02101

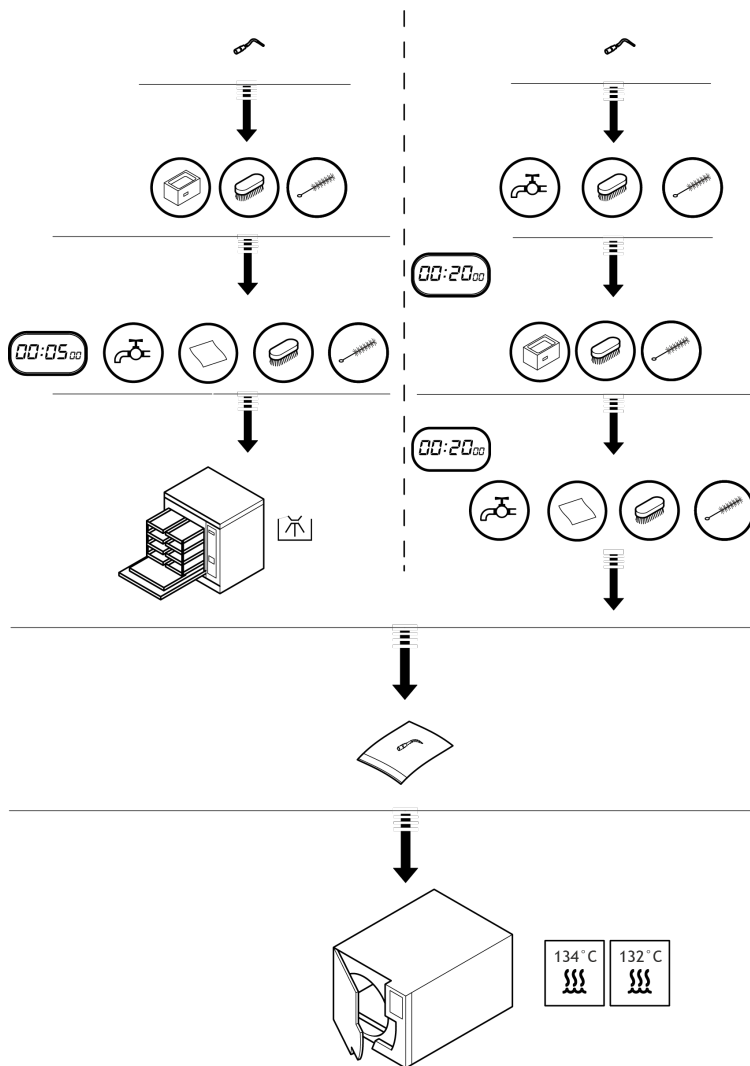
## Sterilisation



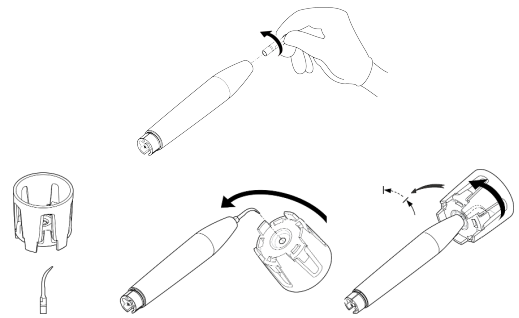
Sterilise prior to each use



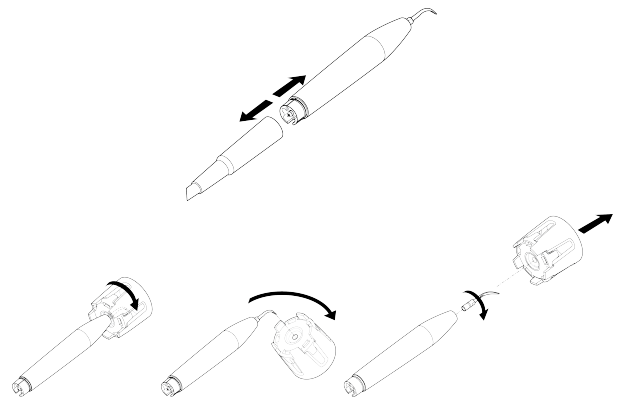
The tips must be cleaned, disinfected and sterilised prior to each use. Prior to each use, please refer to the cleaning, disinfection and sterilisation instructions for tips J02001.



## Installation



## Disassembly



## Manufacturer identification



**SATELEC**  
A Company of ACTEON Group  
17, avenue Gustave Eiffel  
ZI du Phare  
33700 MERIGNAC  
France  
Tel. +33 (0) 556.34.06.07  
Fax. +33 (0) 556.34.92.92  
E.mail : [satelec@acteongroup.com](mailto:satelec@acteongroup.com)  
[www.acteongroup.com](http://www.acteongroup.com)



## Date of first CE marking

1998



The practitioner has to continually monitor the clinical site to immediately identify any heating risk.

Tip | S12-70D | J00431 | (98) | V4 | 05/2021 | NB15EN010D

SATELEC | A Company of ACTEON Group  
17 av. Gustave Eiffel | ZI du Phare  
33700 MERIGNAC | FRANCE  
Tel. +33 (0) 556 34 06 07 | Fax. +33 (0) 556 34 92 92  
[satelec@acteongroup.com](mailto:satelec@acteongroup.com) | [www.acteongroup.com](http://www.acteongroup.com)

Download



Instructions For Use

