



# TK1-1L

## Technical specifications

|                      |  |          |   |   |   |
|----------------------|--|----------|---|---|---|
| Intended use         | Periodontics   |          |   |   |   |
| Indications for use  | Biofilm disruption and removal   |          |   |   |   |
| Description          | Long probe for examining and maintenance of moderate to deep pockets (>4 mm).                                  |          |   |   |   |
| Tip type             | Smooth   |          |  |   |   |
| Allergenic factor    | Tip made of surgical stainless steel as per ASTM F899 - 12b  |          |   |   |   |
|                      | Surgical stainless steel contains: <ul style="list-style-type: none"><li>• nickel</li><li>• chromium</li></ul> |          |   |   |   |
| Commercial reference | TK1-1L : F01004  |          |   |   |   |
| Medical class        | Class of medical device: IIa according to 93/42/EEC directive  |          |   |   |   |
| Adjustments          | Newtron range  | P5 Range | Suprasson P5 Booster  | Prophy Max - P-Max - Implant Center 2 - Piezotome 2 | Irrigation  |
|                      | 2  | 2        | 1   | 2   |  |

## Service life

As it is not possible to establish a maximum number of uses (that may be determined by many parameters such as duration of use, hardness of tissue, the force applied, wear), we recommend that medical devices being routinely used are replaced at least once a year. Replace the medical device if the tip does not vibrate at the expected frequency, the treatment is not progressing as normal and is taking longer or is at a standstill.

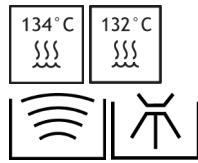
## Associated documentation

| Document title   | References |
|--|------------|
| Consulting electronic user instructions  | J00007     |
| Cleaning, disinfection and sterilisation instructions for tips                         | J02001     |
| BDR clinical tips  | J08031     |
| Ultrasonic generator power settings table  | J58000     |
| General instructions relating to the complete range of standard ultrasonic dental tips | J02101     |

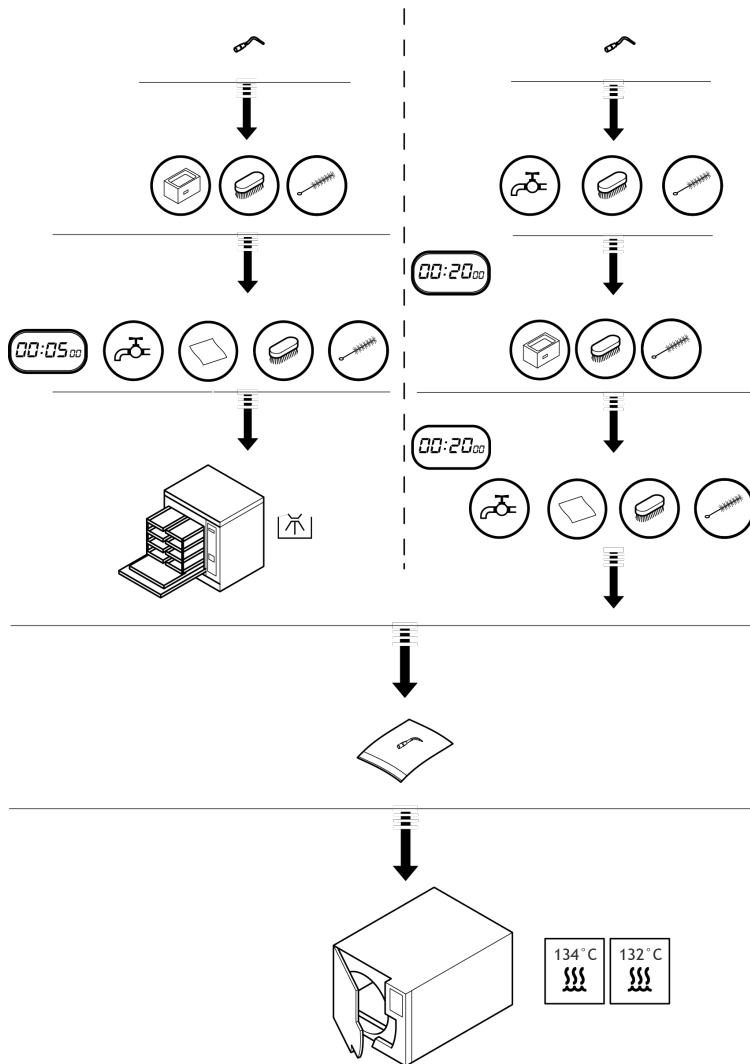
## Sterilisation



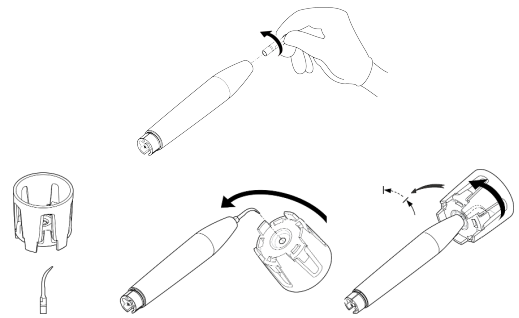
Sterilise prior to each use



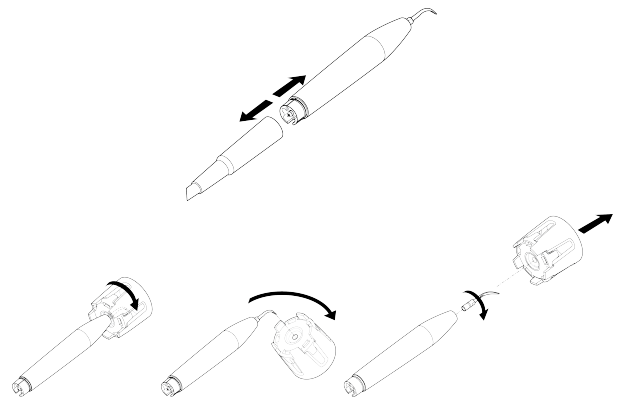
The tips must be cleaned, disinfected and sterilised prior to each use. Prior to each use, please refer to the cleaning, disinfection and sterilisation instructions for tips J02001.



## Installation



## Disassembly



## Manufacturer identification



SATELEC  
A Company of ACTEON Group  
17, avenue Gustave Eiffel  
ZI du Phare  
33700 MERIGNAC  
France  
Tel. +33 (0) 556.34.06.07  
Fax. +33 (0) 556.34.92.92  
E.mail : satelec@acteongroup.com  
www.acteongroup.com



## Date of first CE marking

1998



The practitioner has to continually monitor the clinical site to immediately identify any heating risk.

Tip | TK1-1L | J00321 | (98) | V3 | 05/2021 | NB14EN070C

SATELEC | A Company of ACTEON Group  
17 av. Gustave Eiffel | ZI du Phare  
33700 MERIGNAC | FRANCE  
Tel. +33 (0) 556 34 06 07 | Fax. +33 (0) 556 34 92 92  
satelec@acteongroup.com | www.acteongroup.com

Download



Instructions For Use

